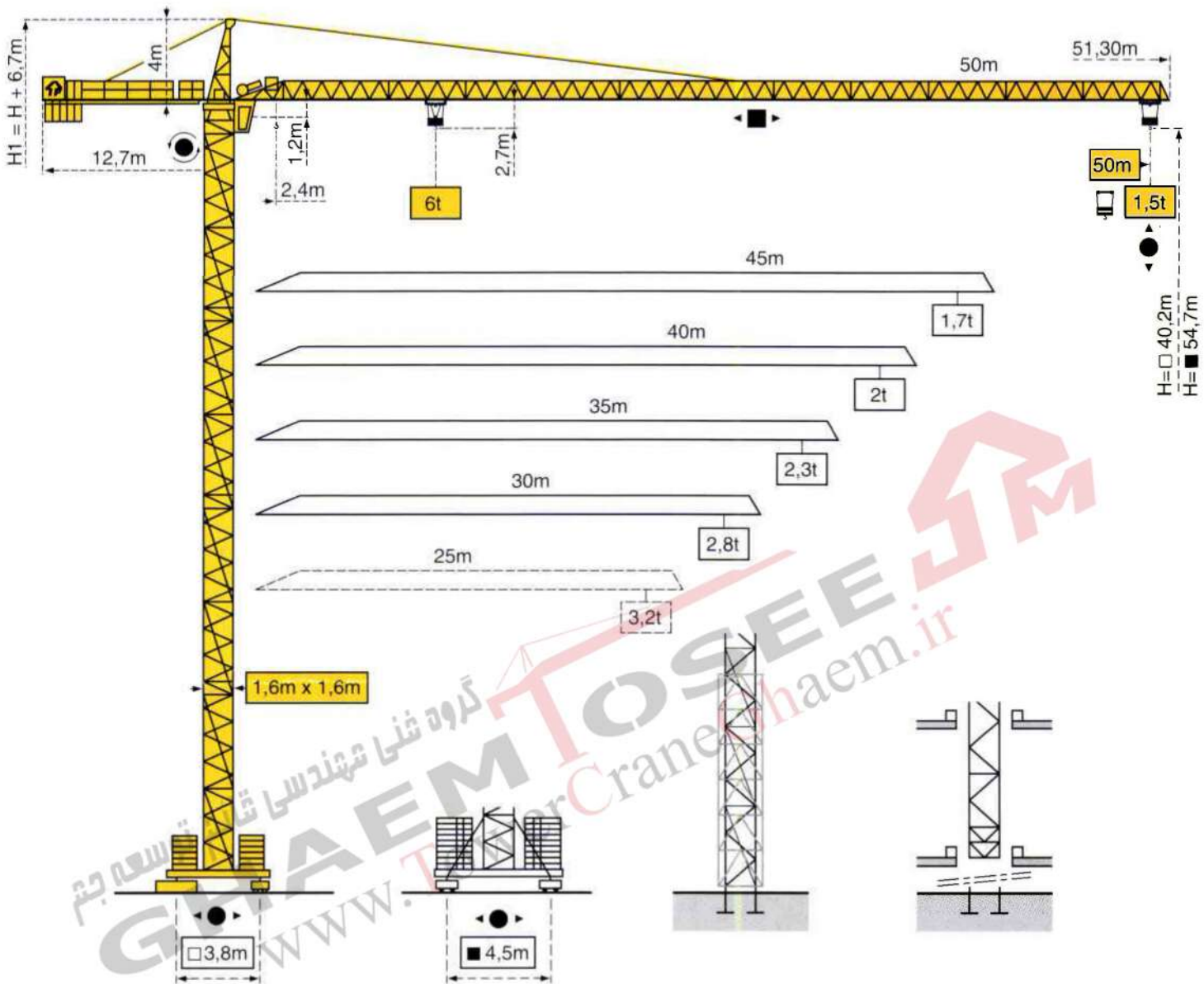


**CITY CRANE MD 90 DIN**



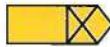
GHAEM TOSEE  
 گروه فنی مهندسی قائم توسعه جیم  
 www.TowerCraneGhaem.ir

GHAEM TOSEE  
 گروه فنی مهندسی قائم توسعه جیم  
 www.TowerCraneGhaem.ir

**CITY CRANE MD 90 DIN**

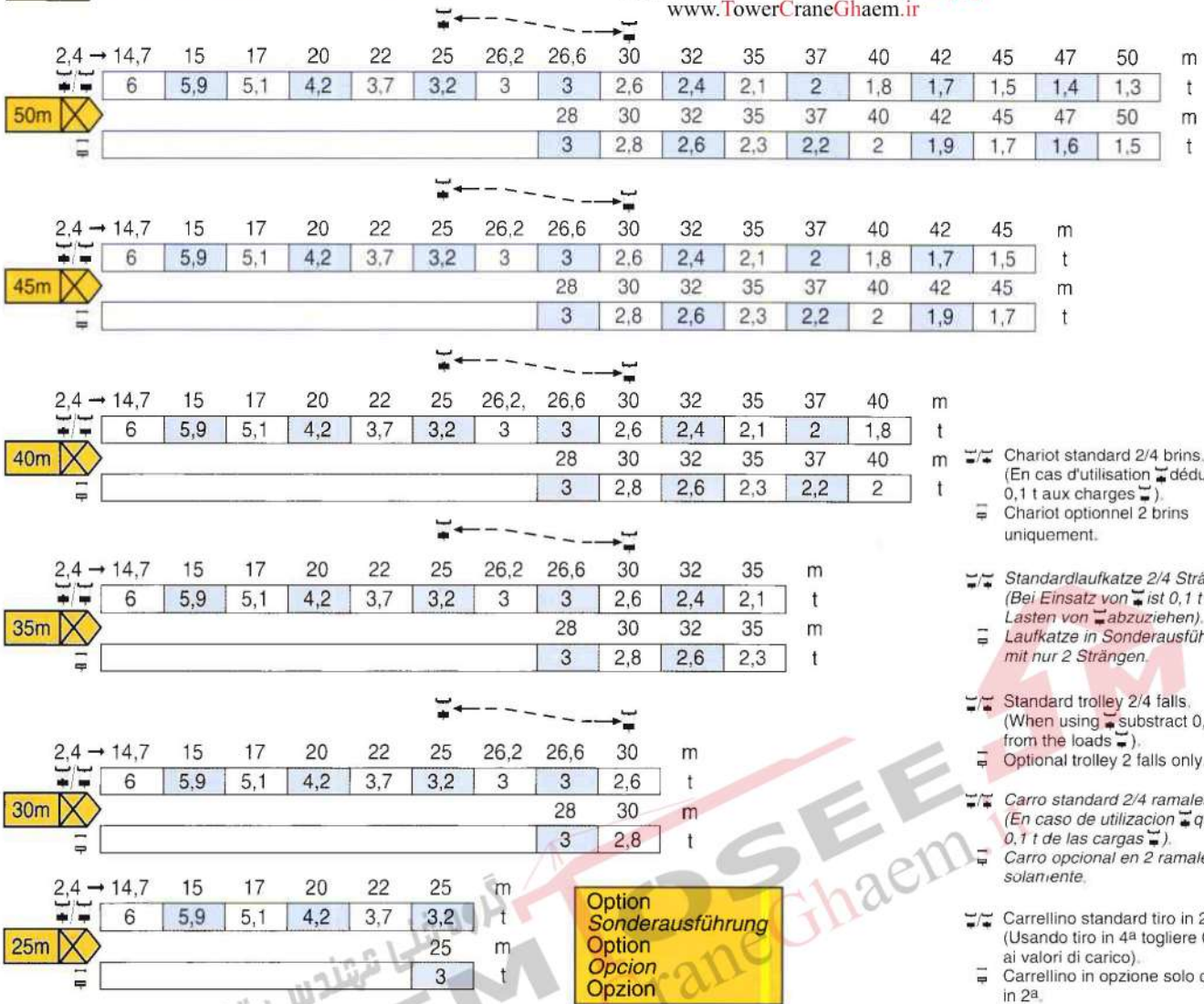


# Courbes de charges - Lastkurven - Load diagrams - Curvas de cargas - Curve di carico



Flèche Ausleger Jib Flecha Braccio

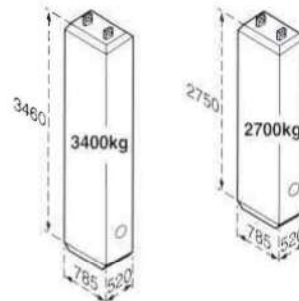
گروه فنی مهندسی قائم توسعه جهم  
**GHAEMTOSEE**  
 www.TowerCraneGhaem.ir



- ☐ Chariot standard 2/4 brins. (En cas d'utilisation déduire 0,1 t aux charges).
- ☐ Chariot optionnel 2 brins uniquement.
- ☐ Standardlaufkatze 2/4 Stränge. (Bei Einsatz von ist 0,1 t der Lasten von abzuziehen). Laufkatze in Sonderausführung mit nur 2 Strängen.
- ☐ Standard trolley 2/4 falls. (When using subtract 0,1 t from the loads). Optional trolley 2 falls only.
- ☐ Carro standard 2/4 ramales. (En caso de utilización quitar 0,1 t de las cargas). Carro opcional en 2 ramales solamente.
- ☐ Carrellino standard tiro in 2<sup>a</sup>/4<sup>a</sup>. (Usando tiro in 4<sup>a</sup> togliere 0,1 t ai valori di carico). Carrellino in opzione solo con tiro in 2<sup>a</sup>.

## Lest de contre-flèche - Gegenauslegerballast - Counter-jib ballast Lastre de contra flecha - Contrappeso

Jib Length (m)	Counter-jib Length (m)	Weight (kg)
50m	12,7m	16 300 (4x3400)+(1x2700)
45m	12,7m	14 900 (2x3400)+(3x2700)
40m	12,7m	13 600 (4x3400)
35m	12,7m	12 900 (3x3400)+(1x2700)
30m	12,7m	11 500 (1x3400)+(3x2700)
25m	12,7m	9 500 (2x3400)+(1x2700)



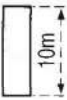

## Lest de base - Grundballast - Base ballast - Lastre de base - Zavorra di base

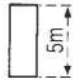
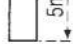
H (m)	ZC 40 A		H (m)	S 40 A		H (m)	S 41 A	
	50→40m	32→25m		50→40m	32→25m		50→40m	32→25m
						54,7	102t	108t
			48	78t	84t	49,7	84t	90t
			44,7	66t	72t	44,7	66t	72t
40,2	60t	65t	39,7	48t	54t	39,7	48t	54t
			34,7	30t	36t	34,7	30t	36t
30,2	40t	40t	29,7	24t	24t	29,7	24t	24t
			24,7	18t	18t	24,7	18t	18t
20,2	35t	35t	19,7	18t	18t	19,7	18t	18t




**TELESCOPABLE - TELESKOPIERBAR - TELESCOPIC - TELESCOPICO - TELESCOPICO**

**Mats - Maste - Masts - Mástil - Torre**

K 407 B   
K 407 E 

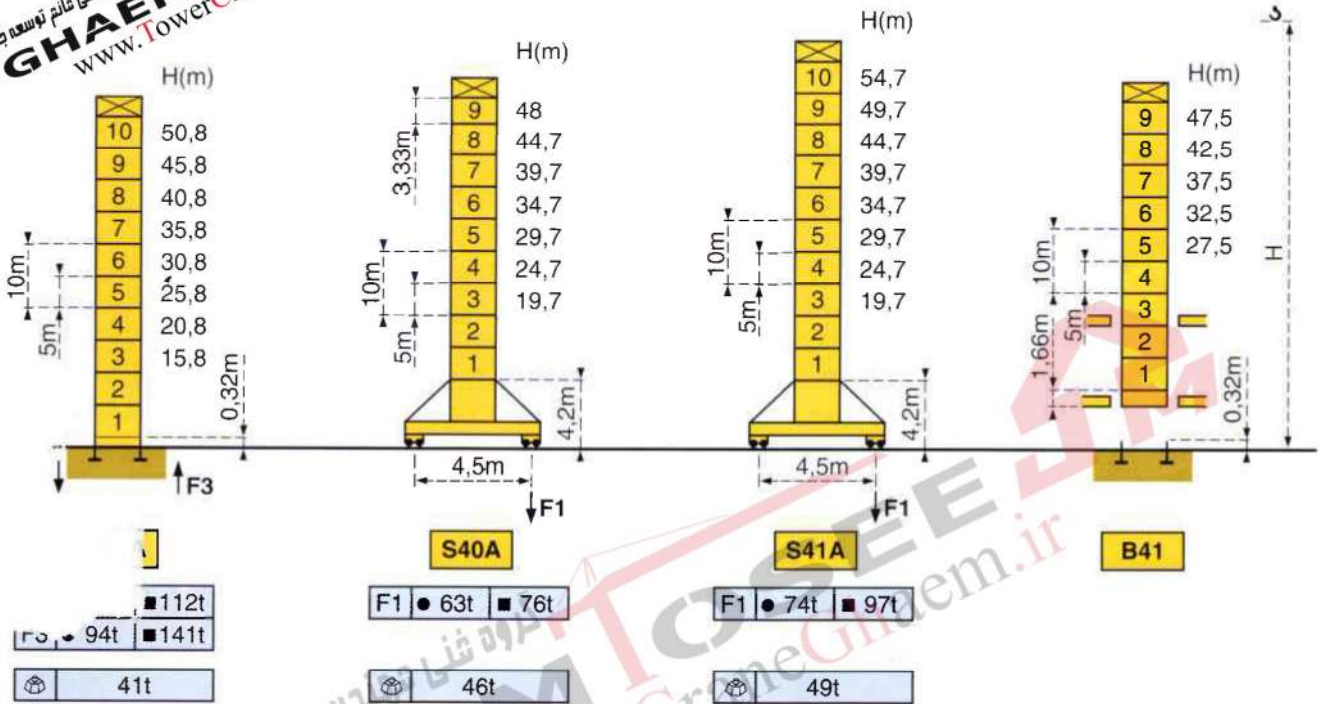
K 407 A   
K 409 A 

K 407 C 

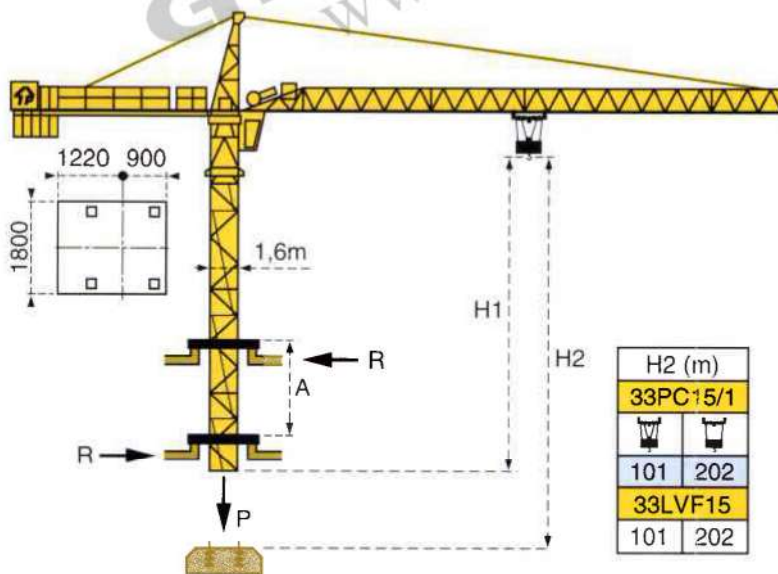
K40-K40 

$H_{\text{total}} = H_{\text{tower}} + 0,3 \text{ m}$

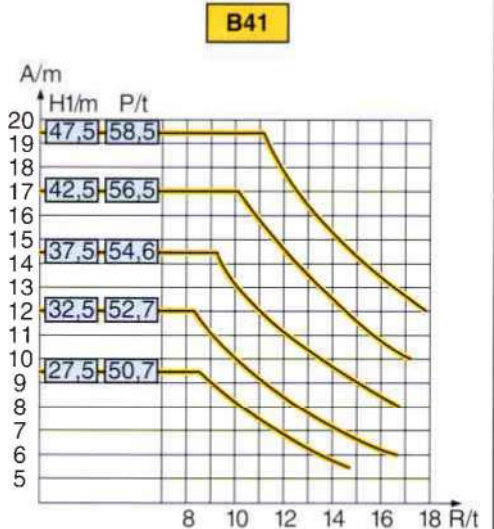
www.GHAEMTOSEE.ir  
www.TowerCraneGhaem.ir



**Télescopage sur dalles - Kletterkrane im Gebäude - Climbing crane  
Telescopage gruas trepadoras - Gru in cavedio**


































H2 (m)	
	33PC15/1
	101 / 202
	33LVF15
	101 / 202






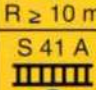

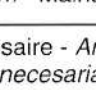
A Distance entre cadres / Abstand zwischen den Rahmen / Distance between collars / Distancia entre marcos / Distanza fra i telai  
 H1 Hauteur grue / Kranhöhe / H1 Crane height / H1 Altura grúa / H1 Altezza gru  
 P Poids de la grue (en service) / Krangewicht (in Betrieb) / Crane weight (in service) / Peso de la grúa (en servicio) / Peso della gru (in servizio)  
 R Réaction horizontale / Horizontalkräfte / Horizontal reaction / Reaccion horizontal / Reazione orizzontale

Mécanismes - Antriebe - Mechanisms - Mecanismos - Meccanismi

				m/min	t		ch -PS hp	kW	
<p><b>GHAEM TOSEE</b> گروه غنی مهندسی قائم توسعه جیم www.TowerCraneGhaem.ir</p> <p>Levage Heben Hoisting Elevación Sollevamento</p>	33PC15/1				7	3	405 m > 405 m*	33	24
					38,5	3			
					77	1,5			
					3,5	6			
					19	6			
					38,5	3			
	33LVF15				4,6	3			
					13	3			
					38,5	3			
					77	1,5			
					2,3	6			
					6,5	6			
					19	6			
					38,5	3			

Distribution - Katzfahren - Trolleying Distribución - Distribuzione		4 D3 V3	15 30 58			4	3
--	--	---------	----------------	--	--	---	---

Orientation - Schwenken - Slewing Orientación - Rotazione		RCV 80	0 → 0,8 tr/min U/min-rpm			2 x 6	2 x 4,4
--	---	--------	--------------------------------	--	--	-------	---------

<p>Translation Kranfahren Travelling Traslación Traslazione</p>	ZC40A 	RT 224	25			2 x 4	2 x 2,9
	S 40-A 	RT 324	12,5 - 25			2 x 7	2 x 5,2
		TCV 449 ARC H ≤ 34,7 m	10 - 50			4 x 6,8	4 x 5
	S 41 A 	RT 443 A1 2V	15 - 30			4 x 5	4 x 3,7
		TCV 449 ARC H ≤ 34,7 m	10 - 50			4 x 6,8	4 x 5

Réseau - Netzstrom - Mains supply - Red - Rete elettrica	380V-400V.50Hz
Puissance électrique nécessaire - Anschlusswert - Necessary electric power Potencia eléctrica necesaria - Potenza elettrica necessaria	33 PC : 50 kVA 33 LVF : 50 kVA
Groupe électrogène - Stromaggregat - Generator set - Grupo electrogeno - Gruppo elettrogeno	*

\*Nous consulter - Auf Anfrage - Consult us - Consultarnos - Consultateci

دفتر تهران: خیابان پاسداران-خیابان شهید کلاهدوز (دولت) بین چهارراه قنات و کاوه  
 روبروی خیابان مطهری-شماره 276 واحد 1  
 تلفن: 021-22766747 شماره: 021-22766748  
 نمایندگاه و انبار سلفچگان: کیلومتر 45 جاده قم، دلیجان  
 منطقه ویژه ی اقتصادی سلفچگان  
 دفتر مرکزی و کارخانه: منطقه صنعتی دولت آباد-قرعی اول، جامی 2  
 قائم توسعه جم تلفن: 031-45836808 , 031-95024603-6  
 همراه: 0913 311 4603 رضایی

Conforme aux directives CEE 84/534 et 87/405 sur le niveau acoustique - Gemäss EV  
 In compliance with the EEC 84/534 and 87/405 instructions on noise level - Conforme  
 Conforme alle direttive CEE 84/534 e 87/405 sul livello acustico

