

گروه شفا مهندسی قائم توسعه جنم
GHAEM TOSEE
 www.TowerCraneGhaem.ir



CITY CRANE MD 170

POTAIN 

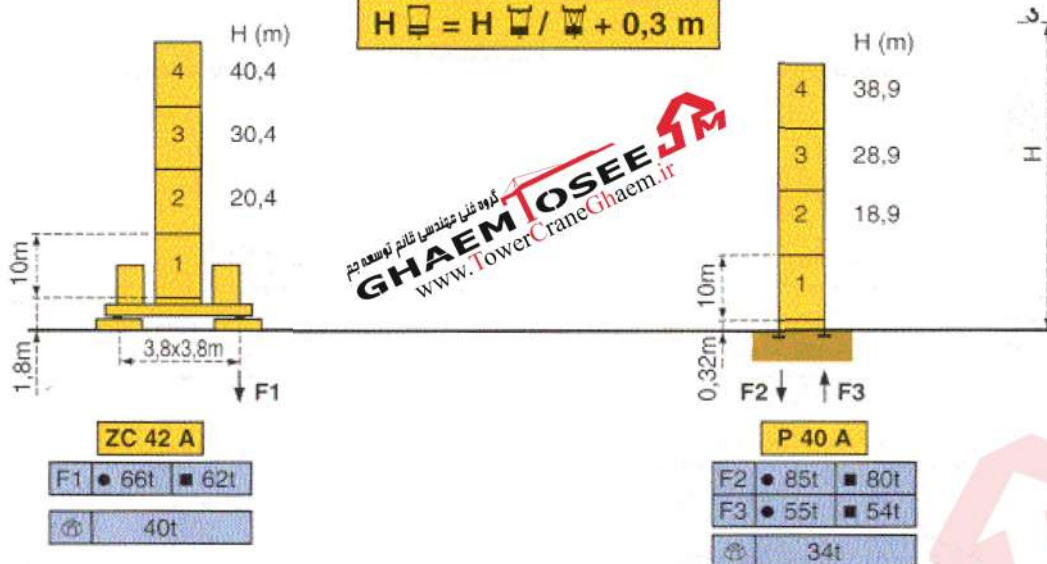


CITY \square 1,60m

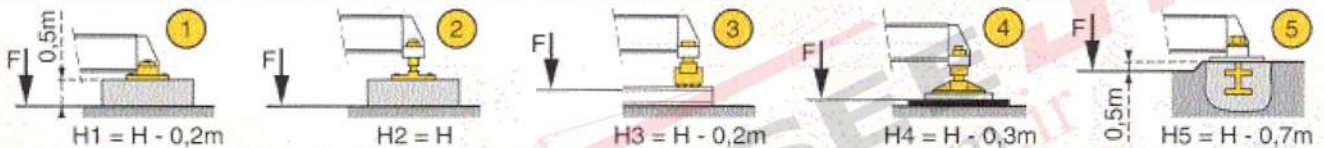
Mat - Mast - Mast - Mástil - Torre

KM 406 E 
 KM 407 E 

$H_{\square} = H_{\square} / \square + 0,3 \text{ m}$



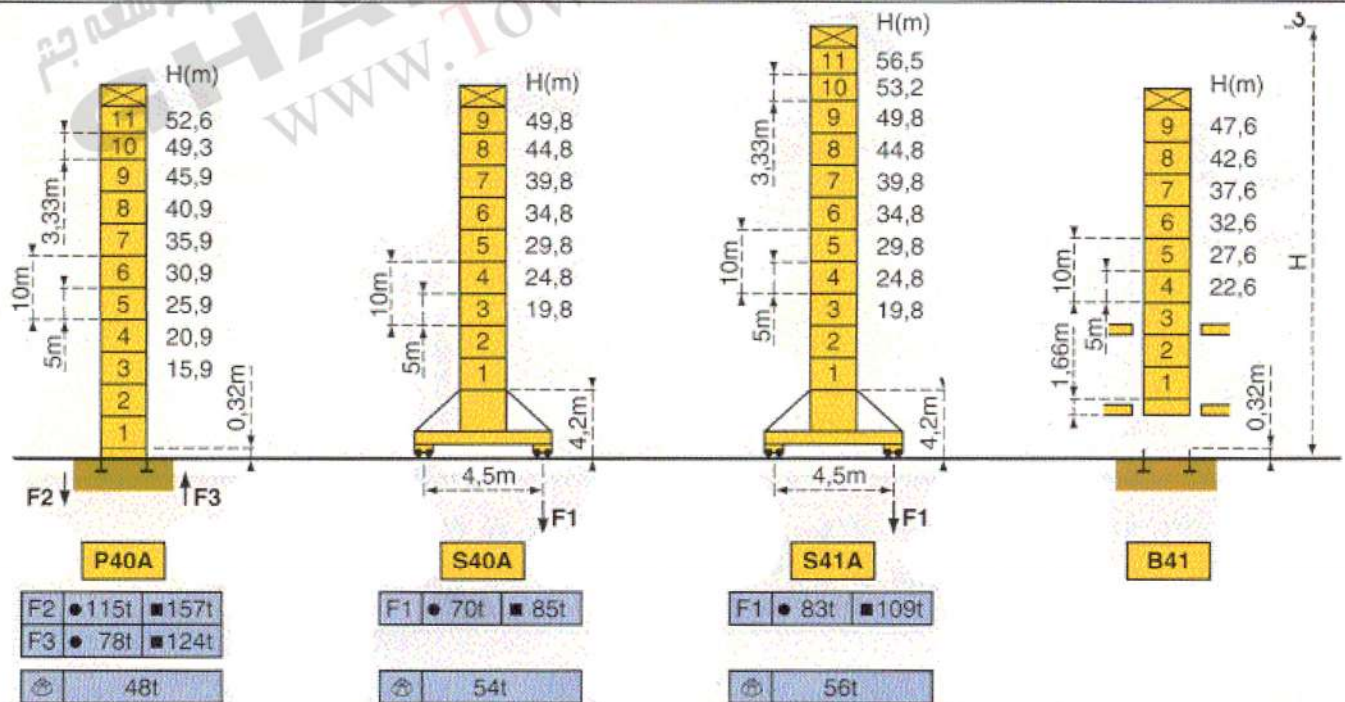
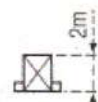
ZC 42A



TELESCOPABLE - TELESKOPIERBAR - TELESCOPIC - TELESCOPICO - TELESCOPICO

K 407 B 
 K 407 E 
 K 407 A 
 K 409 A 
 K 407 C 

Mats - Maste - Masts - Mástil - Torre \square 1,60m

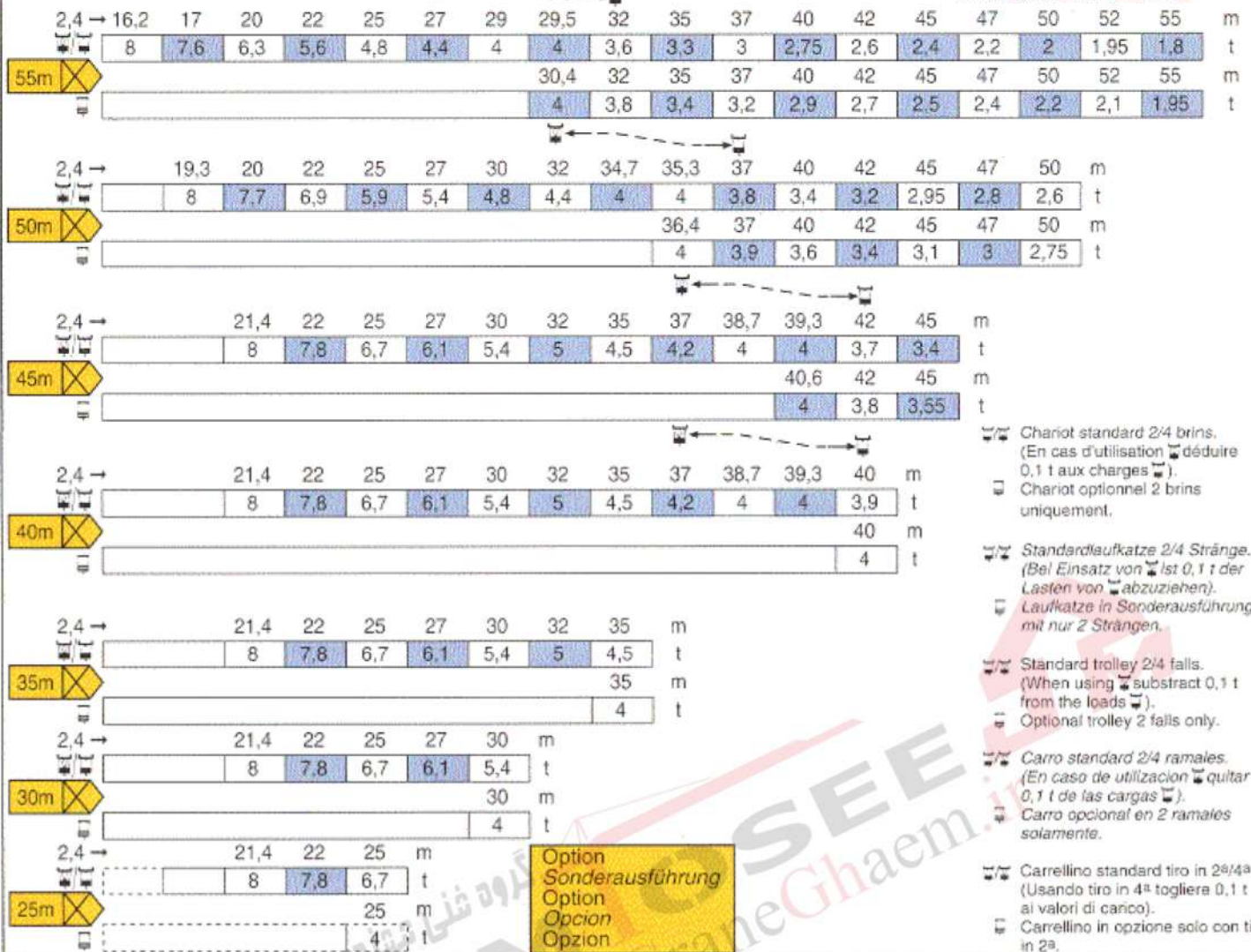


- En service
- In Betrieb
- In service
- En servicio
- In servizio
- Hors service
- Ausser Betrieb
- Out of service
- Fuera de servicio
- Fuori servizio
- ⊕ A vide sans lest avec flèche et hauteur maximum.
- ⊕ Ohne Last und Ballast mit Maximalausleger und Maximalhöhe.
- ⊕ Without load and ballast with longest jib and maximum height.
- ⊕ Sin carga, sin lastre con flecha y altura máxima.
- ⊕ A vuoto senza zavorra e con braccio massimo e altezza massima.

Courbes de charges - Lastkurven - Load diagrams - Curvas de cargas - Curve di carico



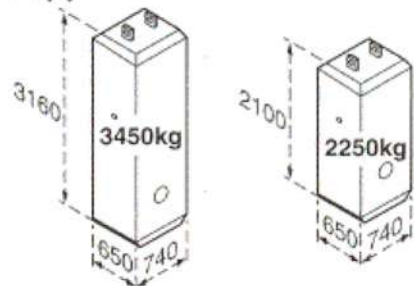
Flèche Ausleger Jib Flecha Braccio



- ☐☐☐ Chariot standard 2/4 brins. (En cas d'utilisation ☐☐ déduire 0,1 t aux charges ☐☐).
- ☐☐☐ Chariot optionnel 2 brins uniquement.
- ☐☐☐ Standardlaufkatze 2/4 Stränge. (Bei Einsatz von ☐☐ ist 0,1 t der Lasten von ☐☐ abzuziehen).
- ☐☐☐ Laufkatze in Sonderausführung mit nur 2 Strängen.
- ☐☐☐ Standard trolley 2/4 falls. (When using ☐☐ subtract 0,1 t from the loads ☐☐).
- ☐☐☐ Optional trolley 2 falls only.
- ☐☐☐ Carro standard 2/4 ramaies. (En caso de utilizacion ☐☐ quitar 0,1 t de las cargas ☐☐).
- ☐☐☐ Carro opcional en 2 ramaies solamente.
- ☐☐☐ Carrellino standard tiro in 2^a/4^a. (Usando tiro in 4^a togliera 0,1 t ai valori di carico).
- ☐☐☐ Carrellino in opzione solo con tiro in 2^a.

**Lest de contre-flèche - Gegenauslegerballast - Counter-jib ballast
 Lastre de contra flecha - Contrappeso**

			(kg)
55m	16m	18 300 (4x3450)+(2x2250)	
50m	16m	16 050 (4x3450)+(1x2250)	
45m	13m	20 700 (6x3450)	
40m	13m	19 500 (5x3450)+(1x2250)	
35m	13m	17 250 (5x3450)	
30m	13m	14 850 (3x3450)+(2x2250)	
25m	13m	12 600 (3x3450)+(1x2250)	

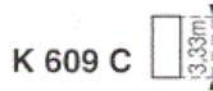
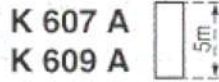
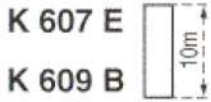


Lest de base - Grundballast - Base ballast - Lastre de base - Zavorra di base

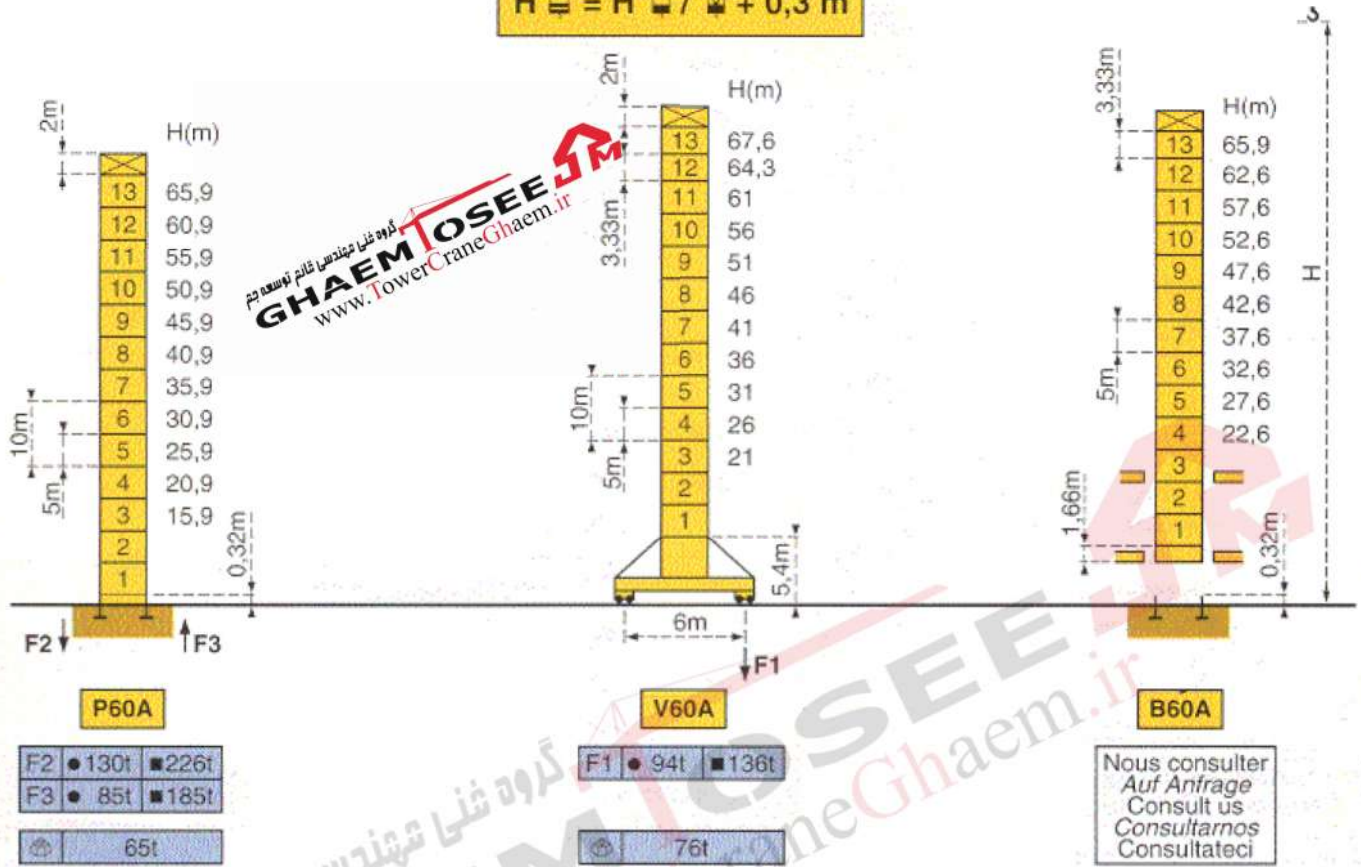
H (m)			H (m)			H (m)			H (m)	
	55→40m	35→25m		55→40m	35→25m		55→40m	35→25m		55→25m
									67,6	120t
									64,3	108t
						56,5	96t	102t	61	96t
						53,2	78t	84t	56	72t
			49,8	66t	72t	49,8	66t	72t	51	48t
			44,8	54t	60t	44,8	54t	60t	46	36t
40,4	75t	80t	39,8	54t	54t	39,8	54t	54t	41	24t
			34,8	54t	54t	34,8	54t	54t	36	24t
30,4	70t	80t	29,8	48t	48t	29,8	48t	48t	31	24t
			24,8	48t	48t	24,8	48t	48t	26	24t
20,4	70t	80t	19,8	48t	48t	19,8	48t	48t	21	24t
ZC 42 A ●●			S 40 A ●●			S 41 A ●●			V 60 A ●●	

TELESCOPABLE - TELESKOPIERBAR - TELESCOPIC - TELESCOPICO - TELESCOPICO

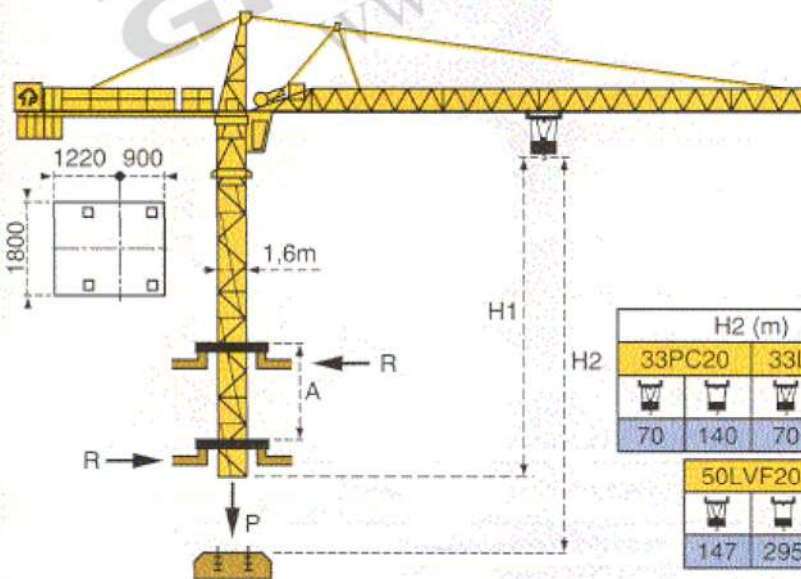
Mats - Maste - Masts - Mástil - Torre 2m



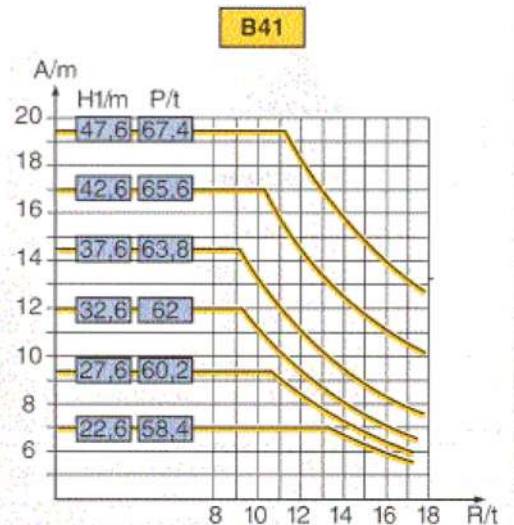
$$H_{\square} = H_{\square} / \square + 0,3 \text{ m}$$



Telescopage sur dalles - Kletterkrane im Gebäude - Climbing crane
Telescopage gruas trepadoras - Gru in cavedio



H2 (m)			
33PC20	33LVF20		
70	140	70	140
50LVF20			
147	295		



دفتر تهران: خیابان پاسداران-خیابان شهید کلاهدوز (دولت) بین چهارراه قنات و کاره
روبروی خیابان مطهری-شماره 276 واحد 1
تلفن: 021-22766747 شماره: 021-22766748

نمایشگاه و انبار سلفچگان: کیلومتر 45 جاده قم، دلیجان
منطقه ویژه ی اقتصادی سلفچگان

دفتر مرکزی و کارخانه: منطقه صنعتی دولت آبادخرعی اول، جامی 2
قائم توسعه جم تلفن: 031-95024603-6, 031-45836808
همراه: 0913 311 4603 رضایی

A Distance between collars
H1 Crane height
P Crane weight (in service)
R Horizontal reaction

A Distancia entre marcos
H1 Altura grúa
P Peso de la grúa (en servicio)
R Reaccion horizontal

A Distanza fra i telai
H1 Altezza gru
P Peso della gru (in servizio)
R Reazione orizzontale