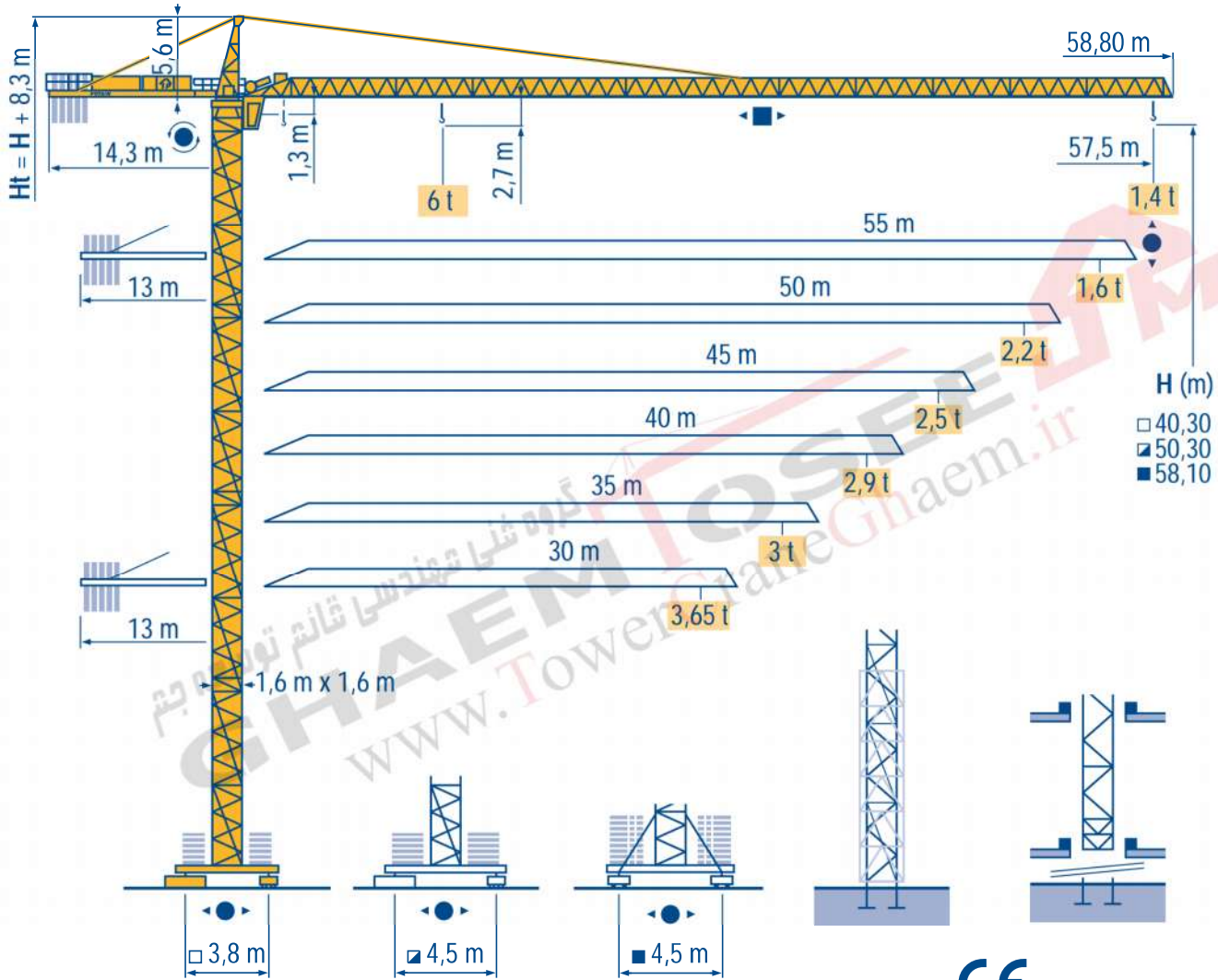


CITY CRANE MD 125 A



LNQ 1

HD	
HDT	
GTMR	
CITY CRANE	
TOPKIT MD	
MR	
MAXI MD	
MAXI TOPKIT	

گروه فنی مهندسی قائم توسعه جیم

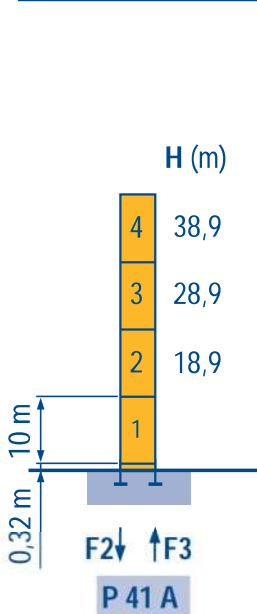
 www.TowerCraneGhaem.ir



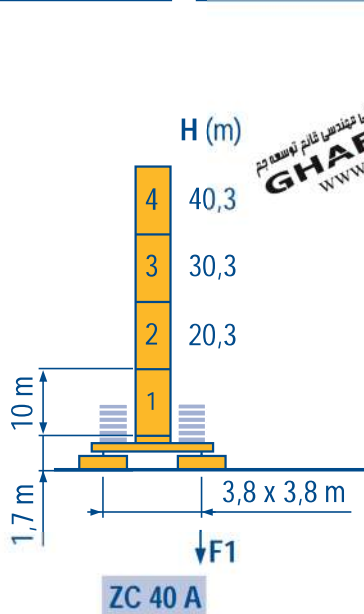
Mat / Réactions
Maste / Eckdrücke
City 1,6 m

F Masts / Reactions
D Mástil / Reacciones
City 1,6 m

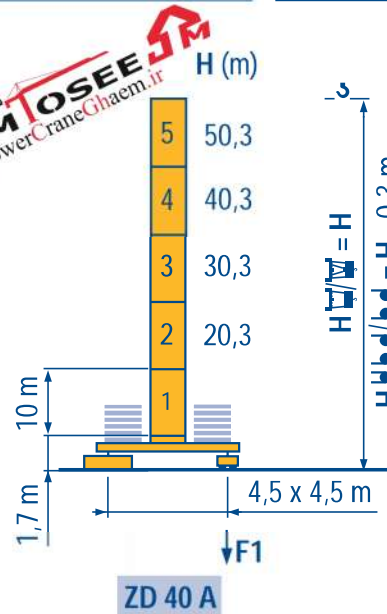
GB Torre / Reazioni
E 塔身/反力
City 1,6 m



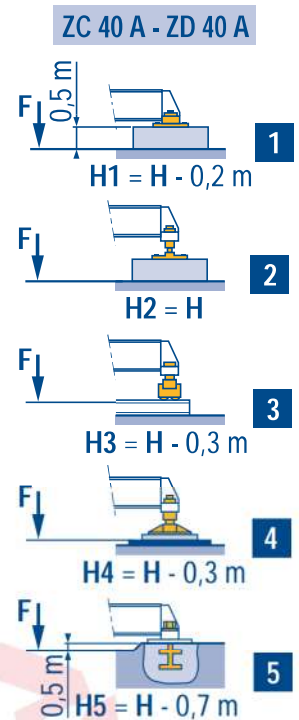
F2	● 80 t	■ 88 t
F3	● 54 t	■ 64 t
👤	31 t	



F1	● 58 t	■ 63 t
👤	35 t	



F1	● 65 t	■ 83 t
👤	40 t	

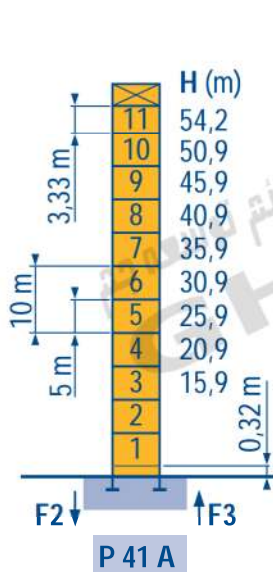


LNQ 1

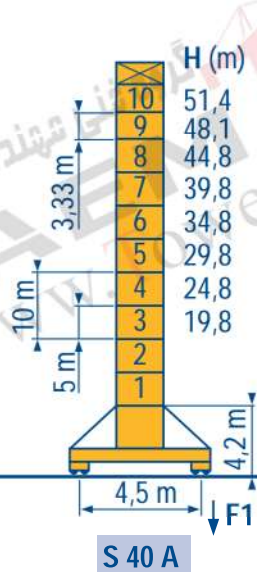
Télescopable 1,6 m
Teleskopierbar 1,6 m

F Telescopico 1,6 m
D Telescopico 1,6 m

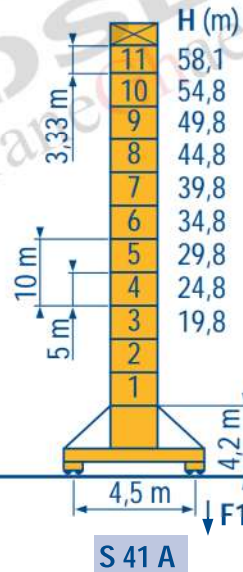
GB Telescopico 1,6 m
E 可顶升 1,6 m



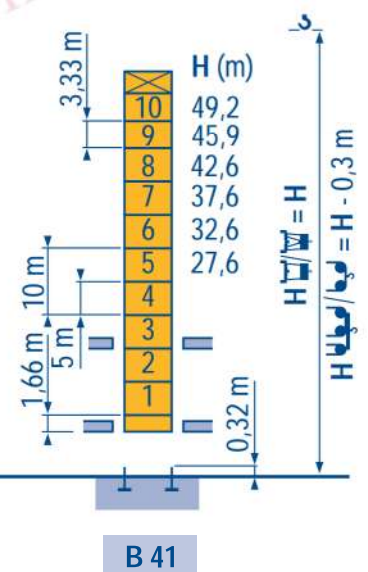
F2	● 115 t	■ 173 t
F3	● 81 t	■ 142 t
👤	46 t	



F1	● 73 t	■ 96 t
👤	50 t	



F1	● 86 t	■ 121 t
👤	54 t	



LNQ 1

👁 Voir télescopage sur dalles
● Réactions en service
■ Réactions hors service
👤 A vide sans lest avec flèche et hauteur maximum.

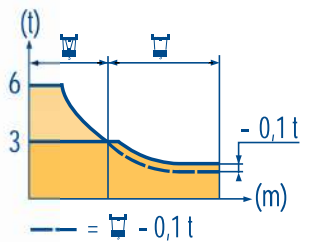
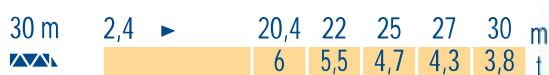
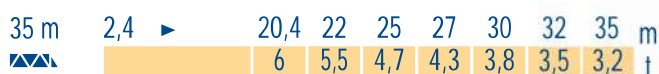
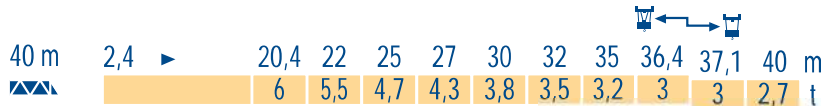
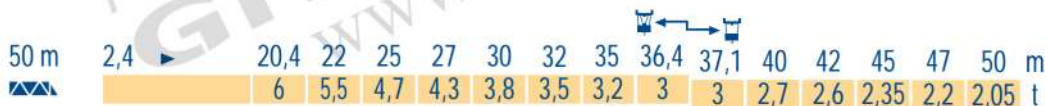
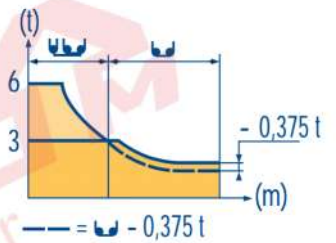
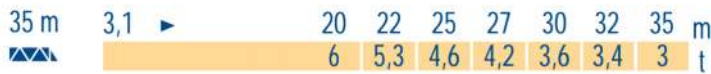
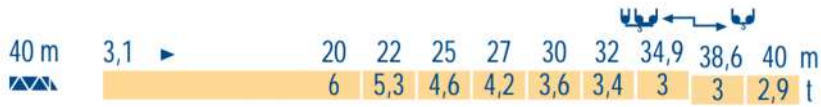
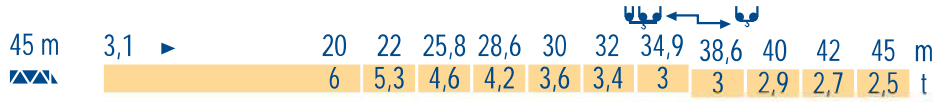
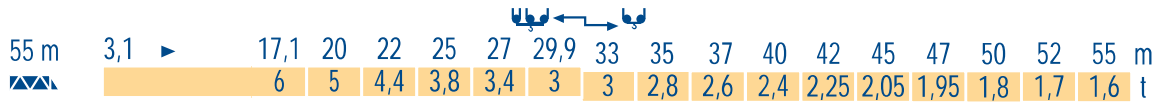
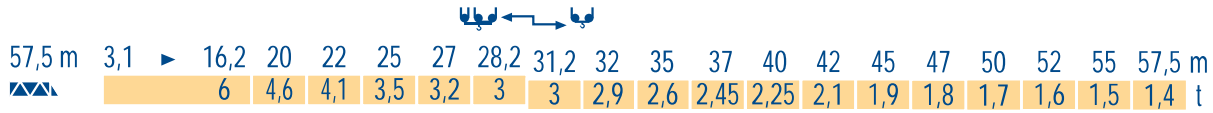
F See climbing crane
Reactions in service
Reactions out of service
Without load and ballast with longest jib and maximum height.

GB Consultare gru in cavedio
Reazioni in servizio
Reazioni fuori servizio
A vuoto senza zavorra e con braccio massimo e altezza massima.

👁 Siehe kletterkrane im gebäude
● Reaktionskräfte in Betrieb
■ Reaktionskräfte außer Betrieb
👤 Ohne Last und Ballast mit Maximalausleger und Maximalhöhe.

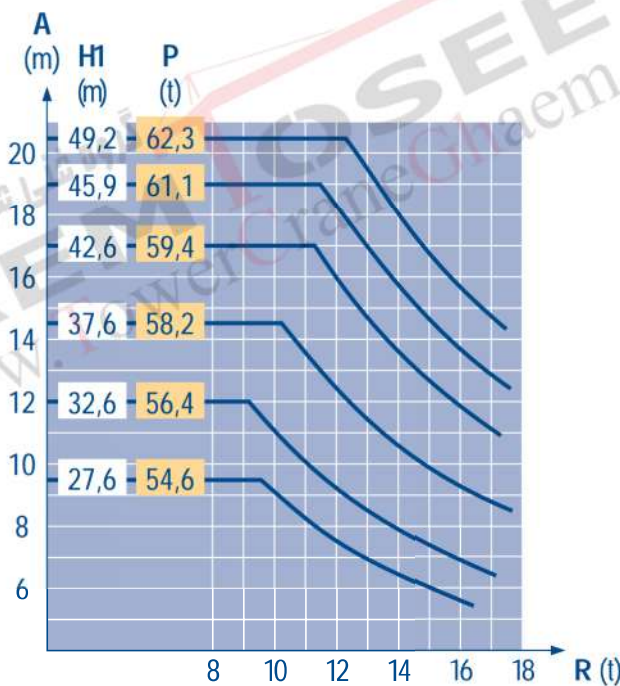
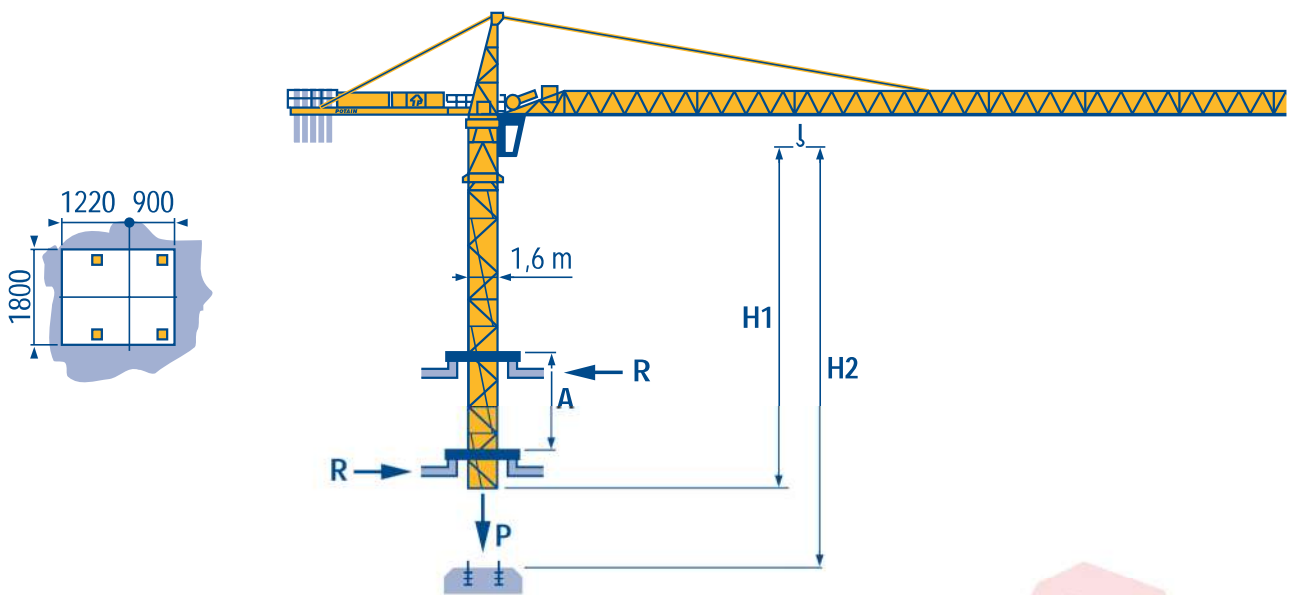
D Vea grua trepadora
Reacciones en servicio
Reacciones fuera de servicio
Sin carga, sin lastre con flecha y altura máxima.

E 見楼板顶升
工作状态下的反应
非工作状态下的反应
空载, 无配重, 起重臂和高度均为最大值



LNQ 1

گروه فناوری مهندسی قائم توسعه و
GHAEM TOSEE
 www.TowerCraneGhaem.ir



LN0 1

A Distance entre cadres
H1 Hauteur grue
P Poids de la grue (en service)
R Réaction horizontale

F

Distance between collars
Crane height
Crane weight (in service)
Horizontal reaction

GB

Distanza fra i telai
Altezza grue
Peso della gru (in servizio)
Reazione orizzontale

I

A Abstand zwischen den Rahmen
H1 Kranhöhe
P Krangewicht (in Betrieb)
R Horizontalkräfte

D

Distancia entra marcos
Altura grúa
Peso de la grúa (en servicio)
Reaccion horizontal

E

各附着框之间距离
工作状态下塔机高度
工作状态下塔机重量
水平反力

C

Lest de contre-flèche
Gegenauslegerballast



Counter-jib ballast
Lastre de contra flecha

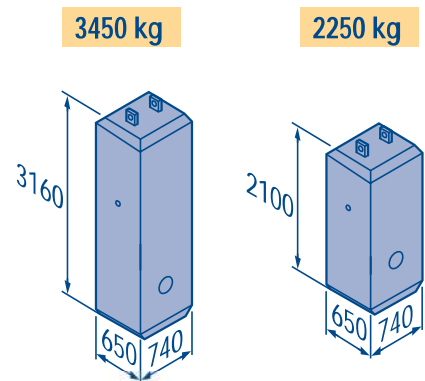


Contrappeso
平衡臂重



		3450 kg	2250 kg	(kg)
57,5 m	14,3 m	5	-	17 250
55 m	14,3 m	4	1	16 050
50 m	13 m	4	1	16 050
45 m	13 m	3	2	14 850
40 m	13 m	4	-	13 800
35 m	13 m	3	1	12 600
30 m	13 m	2	2	11 400

LNQ 1



Lest de base
Grundballast



Base ballast
Lastre de base



Zavorra di base
压重



□1,6 m	ZC 40 A ●>	H (m)	40,3	30,3	20,3						
		(t)	65	60	55						
□1,6 m	ZD 40 A ●>	H (m)	50,3	40,3	30,3	20,3					
		(t)	70	55	45	45					
□1,6 m	S 40 A ●>	H (m)	51,4	48,1	44,8	39,8	34,8	29,8	24,8	19,8	
		(t)	84	72	54	36	36	36	36	36	
□1,6 m	S 41 A ●>	H (m)	58,1	54,8	49,8	44,8	39,8	34,8	29,8	24,8	19,8
		(t)	114	102	78	54	36	36	36	36	36

LNQ 1



			U				U				ch - PS hp	kW	
	33 PC 15	m/min	—	6	37,5	75	—	3	19	37,5	33	24	320 m > 320
		t	—	3	3	1,5	—	6	6	3			
	33 LVF 15	m/min	4,6	12	37,5	75	2,3	6	19	37,5	33	24	320 m > 320
		t	3	3	3	1,5	6	6	6	3			
45 RCS 15	m/min	—	—	0 → 52,5	0 → 105	—	—	0 → 26	0 → 52	45	33	472 m > 472	
	t	—	—	3	1,5	—	—	6	3				
	4 D3 V3	m/min	15 - 30 - 58								4	3	
	RCV 145	tr/min U/min rpm	0 → 0,8								2 x 6	2 x 4,4	
	ZC 40 A ZD 40 A	RT 224	 گروه غیا مهندسی قائم توسعه جم GHAEM TOSEE 25 www.TowerCraneGhaem.ir								2 x 4	2 x 2,9	
	S 40 A R ≥ 10 m	RT 324	12,5 - 25								2 x 7	2 x 5,2	
		TCV 449 ARC	10 - 50								4 x 6,8	4 x 5	
	S 41 A R ≥ 10 m	RT 443 A1 2V	15 - 30								4 x 5	4 x 3,7	
		TCV 449 ARC	10 - 50								4 x 6,8	4 x 5	
CEI 38		IEC 38		kVA									
400 V (+6% -10%) 50 Hz		33 PC : 50 kVA 33 LVF : 50 kVA 45 RCS : 65 kVA				84/534 - 87/405							

LNQ 1

	Levage		Hoisting		Sollevamento	
	Distribution		Trolleying		Distribuzione	
	Orientation		Slewing		Rotazione	
	Translation		Travelling		Traslazione	
	Conforme aux directives CEE 84/534 et 87/405 sur le niveau acoustique		In compliance with the EEC 84/534 and 87/405 Instructions on noise level		Conforme alle direttive CEE 84/534 e 87/405 sul livello acustico	
	Nous consulter		Consult us		Consultateci	
	Heben		Elevación		起升	
	Katzfahren		Distribución		变幅	
	Schwenken		Orientación		回转	
	Kranfahren		Traslación		行走	
	Gemäss EWG-Richtlinien 84/534 und 87/405 für den Schall-Leistungspegel		Conforme con las directivas CEE 84/534 y 87/405 sobre el nivel acustico		符合 CEE 84/534 - CEE 87/405 声晌度规定	
	Auf Anfrage		Consultarnos		请向我方咨询	

دفتر تهران: خیابان پاسداران-خیابان شهید کلاهدوز (دولت) بین چهارراه قنات و کاوه
 روبروی خیابان مطهری-شماره 276 واحد 1
 تلفن: 021-22766748 نمابر: 021-22766747

نمایشگاه و انبار سلفچگان: کیلومتر 45 جاده قم، دلچجان
 منطقه ویژه ی اقتصادی سلفچگان

دفتر مرکزی و کارخانه: منطقه صنعتی دولت آبادفرعی اول، جامی 2
 قائم توسعه جم تلفن: 031-95024603-6, 031-45836808
 همراه: 0913 311 4603 رضایی

Réf. 1997.48 LNQ 1

POTAIN
 GROUPE LEGRIS INDUSTRIES

18.Rue de Charbonnières, B.P. 173-F
 69132 ECULLY Cedex
 Tél. (33)04.72.20.20.20
 Fax (33)04.72.20.20.00
 http://www.potain.fr
 E-mail : mkt@potain.fr

CITY CRANE MD 125 A

Copyright.Reproduction interdite © POTAIN 1997

Deutschland
 POTAIN GmbH Tel : 06.105.704.0
Italia
 POTAIN S.p.A. Tel : 039.65.631
China
 Zhangjiagang POTAIN Tel : 520. 877.1451