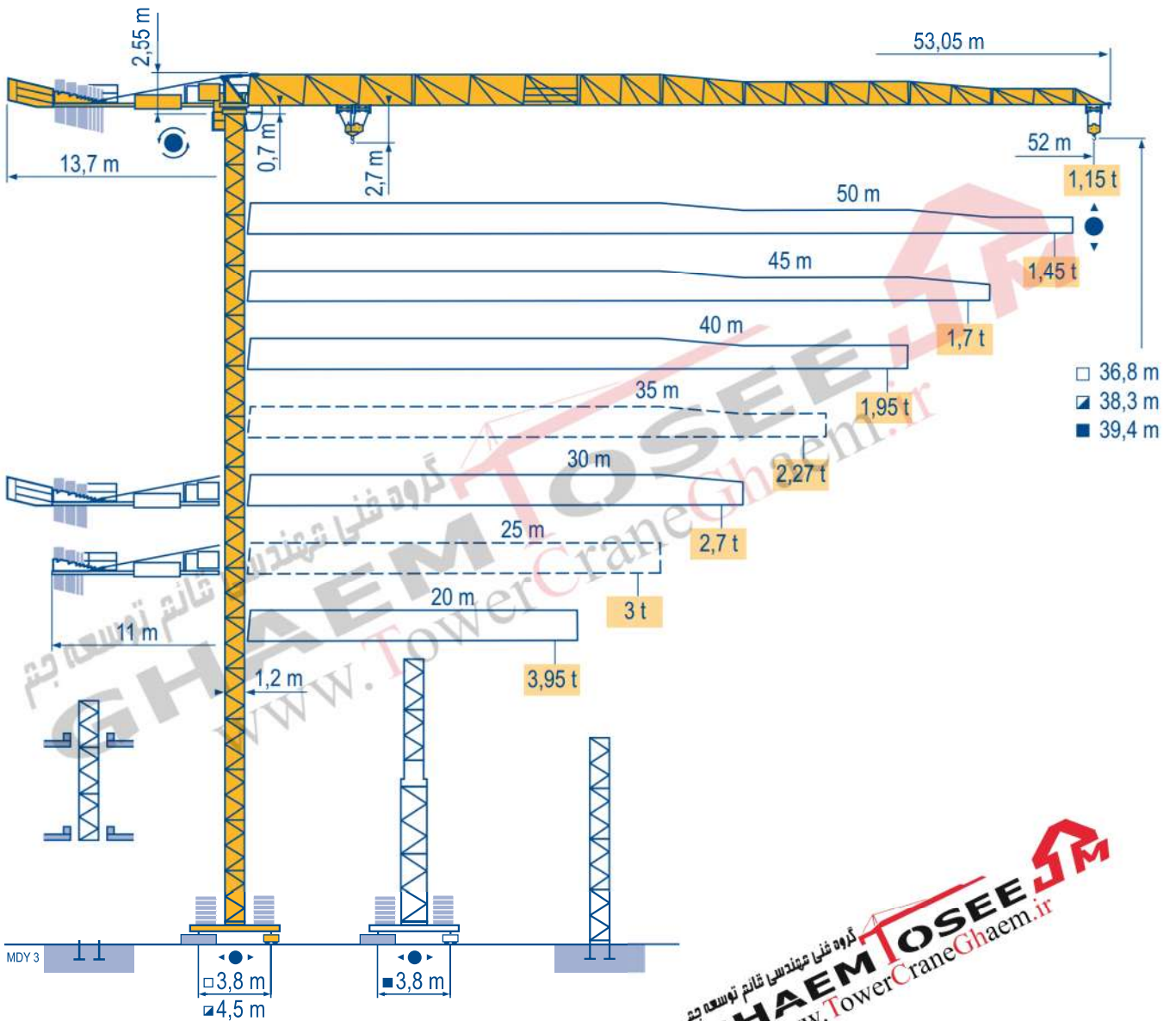


POTAIN 

MCT 88



City Topless



 FEM 1.001-A3

Mat / Réactions \square 1,2 m

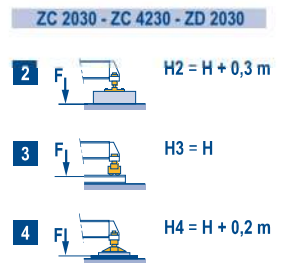
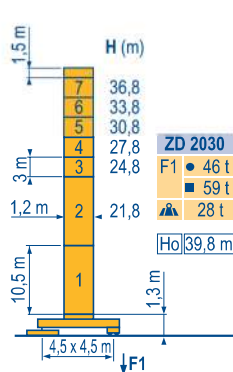
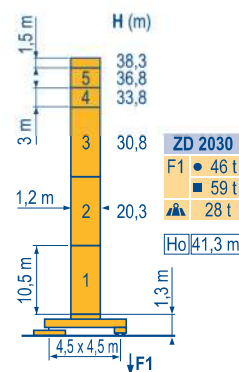
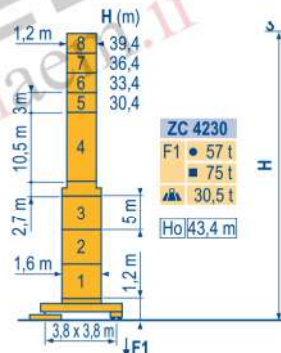
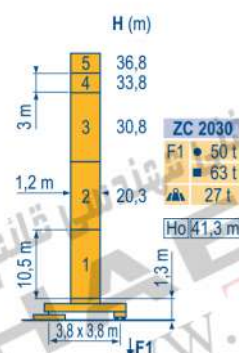
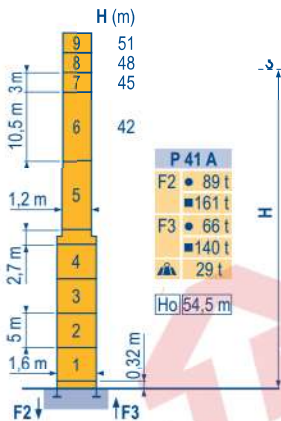
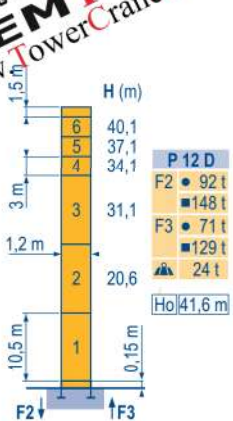
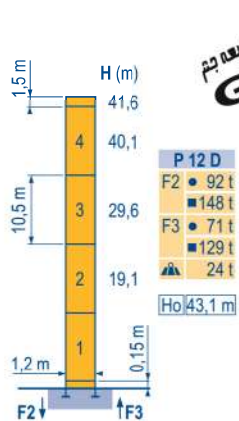
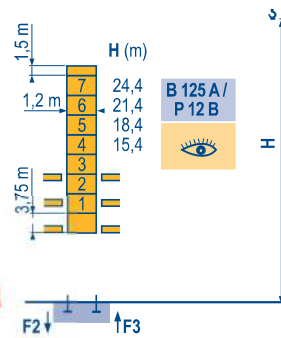
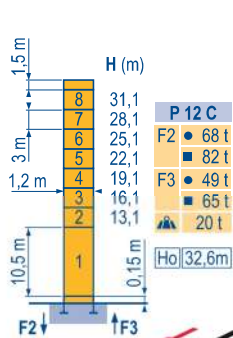
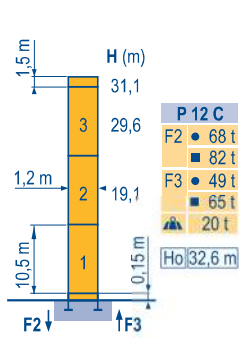
Maste / Eckdrücke \blacktriangle
20 m \Rightarrow 52 m

Masts / Reactions
Mástil / Reacciones
Torre / Reazioni

Tramo / Reações

Композиции башни / Реакции

MDY 4



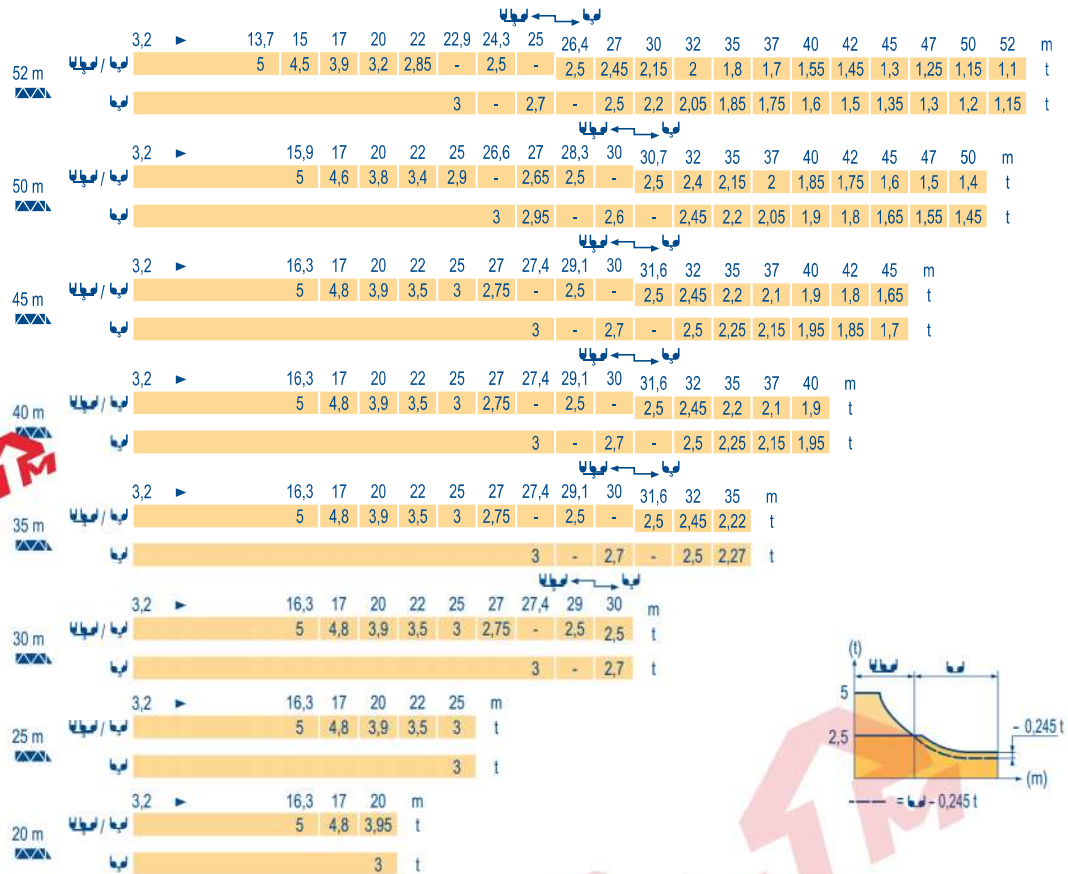
CityTopless MCT 88



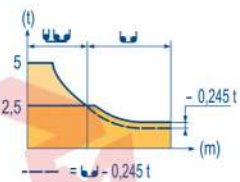
FR	DE	EN	ES	IT	PT	RU
● Réactions en service ■ Réactions hors service	Reaktionskräfte in Betrieb Reaktionskräfte außer Betrieb	Reactions in service Reactions out of service	Reacciones en servicio Reacciones fuera de servicio	Reazioni in servizio Reazioni fuori servizio	Reações em serviço Reações fora de serviço	Реакции при работе Реакции в покое
A vide sans lest (ni train de transport) avec flèche et hauteur maximum.	Ohne Last, Ballast (und Transportachse), mit Maximalausleger und Maximalhöhe.	Without load, ballast (or transport axes), with maximum jib and maximum height.	Sin carga, sin lastre, (ni tren de transporte), flecha y altura máxima.	A vuoto, senza zavorra (ne assali di trasporto) con braccio massimo e altezza massima.	Sem carga (nem trem de transporte) sem lastro com lança e altura máximas.	Вес без груза, балласта (или транспортных осей), с максимальной длиной стрелы и максимальной высотой.
Ho H sans cabine	H Ohne Fahrerhaus	H without cab	H sin cabina	H senza cabina	H sem cabine	Высота без кабины

Courbes de charges
Lastkurven
Load diagrams
Curvas de cargas
Curve di carico
Curva de cargas
Диаграммы грузоподъемностей

MDY 2

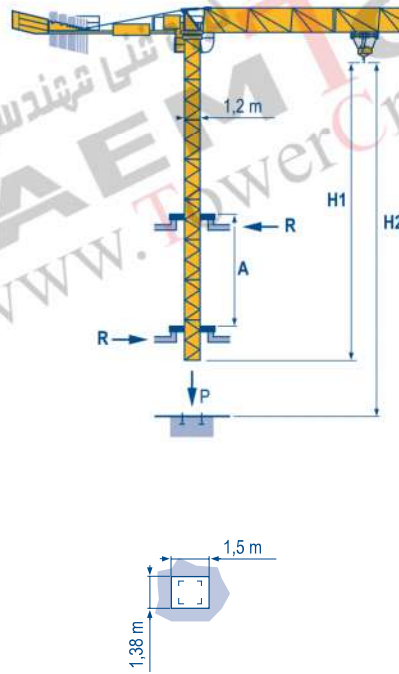


گروه غلى مهندسيان قائم توسعه جيم
GHAEM TOSEE
www.TowerCraneGhaem.ir

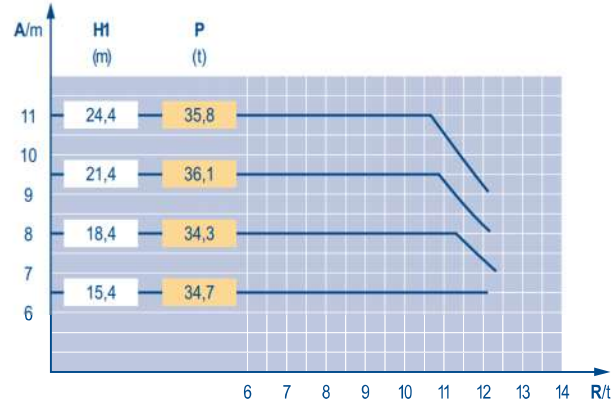


Télescopage sur dalles
Kletterkrane im Gebäude
Climbing crane
Telescopage gruas trepadoras
Gru in cavedio
Telescopagem sobre lages
Кран, ползущий внутри здания

MDY 3



B 125 A



City Topless
MCT 88

POTAIN

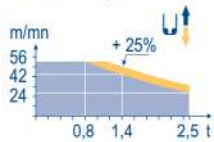
	FR	DE	EN	ES	IT	PT	RU
A	Distance entre cadres	Abstand zwischen den Rahmen	Distance between collars	Distancia entra marcos	Distanza fra i telai	Distância entre quadros	Расстояние между рамками крепления
H1	Hauteur grue	Kranhöhe	Crane height	Altura grúa	Altezza gru	Altura da grua	Высота крана
P	Poids de la grue (en service)	Krangewicht (in Betrieb)	Crane weight (in service)	Peso de la grúa (en servicio)	Peso della gru (in servizio)	Peso da grua (em serviço)	Вес крана (при работе)
R	Réaction horizontale	Horizontalkräfte	Horizontal reaction	Reaccion horizontal	Reazione orizzontale	Reacção horizontal	Горизонтальные реакции
	Voir télescopage sur dalles	Siehe Kletterkrane im Gebäude	See climbing crane	Vea grua trepadora	Consultare gru in cavedio	Ver telescopagem sobre lages	См. кран, ползущий внутри здания

Mécanismes
Antriebe
Mechanisms
Mecanismos
Meccanismi
Mecanismos
Механизмы

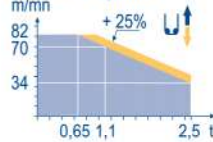
MDY 4

		U						U				ch - PS hp	kW														
▲	15 LVF 13 Optima	m/min	2,8	→	7,6	→	24	→	42	→	56	1,4	→	3,8	→	12	→	21	→	28	15	11	200 m				
		t	2,5		2,5		2,5		1,4		0,8	5		5		5		2,8		1,6							
	25 LVF 13 Optima	m/min	4	→	11	→	34	→	56	→	70	→	82	2	→	6	→	17	→	28	→	35	→	41	25	18	329 m
		t	2,5		2,5		2,5		1,45		1,1		0,65	5		5		5		2,9		2,2		1,3			
●	15 LVF 15 Optima	m/min	2,3	→	6,1	→	19	→	34	→	46													15	11	159 m	
		t	3		3		3		1,7		0,95																
●	25 LVF 15 Optima	m/min	3,6	→	9,6	→	30	→	48	→	60	→	72												25	18	228 m
		t	3		3		3		1,7		1,3		0,75														
●	RVF 61 Optima +	tr/min U/min - rpm	0 → 0,8															7,5	5,5								
◀ ▶	4 DVF 3	m/min	0 → 63															5	3,7								
ZC 2030 ZD 2030	RT 224	m/min	25															2 x 4	2 x 2,9								
			12,5 - 25															2 x 7	2 x 5,2								
CEI 38			IEC 38															kVA									
400 V (+6% -10%) 50 Hz																	15 LVF : 25 kVA 25 LVF : 35 kVA										

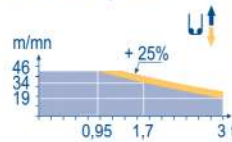
15 LVF 13 Optima



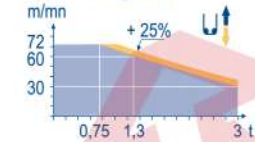
25 LVF 13 Optima



15 LVF 15 Optima



25 LVF 15 Optima



FR	DE	EN	ES	IT	PT	RU
Levage	Heben	Hoisting	Elevación	Sollevamento	Elevação	Подъём
Distribution	Katzfahren	Trolleying	Distribución	Distribuzione	Distribuição	Перемещение каретки
Orientation	Schwenken	Slewing	Orientación	Rotazione	Rotação	Поворот
Translation	Kranfahren	Travelling	Traslación	Traslocazione	Translação	Перемещение крана

Document commercial non contractuel. Pour toute information technique se référer à la notice correspondante. Unverbindliches Vertriebsdokument. Für technische Informationen, siehe die entsprechenden Anweisungen. This commercial document is not legally binding. For any technical information, please refer to the corresponding instructions. Documento comercial no contractual. Para cualquier información técnica, ver la noticia correspondiente. Documento commerciale non vincolante, per tutte le informazioni tecniche fare riferimento al catalogo istruzioni. Documento comercial não contratual. Para qualquer informação técnica complementar consultar as respectivas instruções. Этот коммерческий документ не является юридически обязательным. Для получения технической информации, см. соответствующие инструкции.



دفتر تهران: خیابان پاسداران-خیابان شهید کلاهدوز(دولت)بین چهارراه قنات و کاوه
 روبروی خیابان مطهری-شماره 276 واحد 1
 تلفن: 021-22766747 نمابر: 021-22766748
 نمایشگاه و انبار سلفچگان: کیلومتر 45 جاده قم، دلجان منطقه ویژه ی اقتصادی سلفچگان
 دفتر مرکزی و کارخانه: منطقه صنعتی دولت آباد-فرعی اول، جامی 2
 قائم توسعه جم تلفن: 031-95024603-6 , 031-45836808
 همراه: 0913 311 4603 رضایی

Americas
 Tel : +1 888 479 7278
 Tel : +1 717 593 2000

Europe – Middle East – Africa
 Tel : +33 (0) 4 72 81 50 00
 Tel : +44 (0) 191 522 2000

Asia – Pacific
 Tel : +65 6264 1188
 Fax : +65 6862 4040
 www.manitowoccranes.com

18, rue de Charbonnières - B.P.173
 69132 ECULLY Cedex - France
 Tél. : +33 (0) 4 72 18 20 20
 Fax. : +33 (0) 4 72 18 20 00
 www.manitowoccranes.com

City Topless MCT 88
 Réf. 2006 40 MDY 5
 Copyright.Reproduction interdite © POTAIN 2006