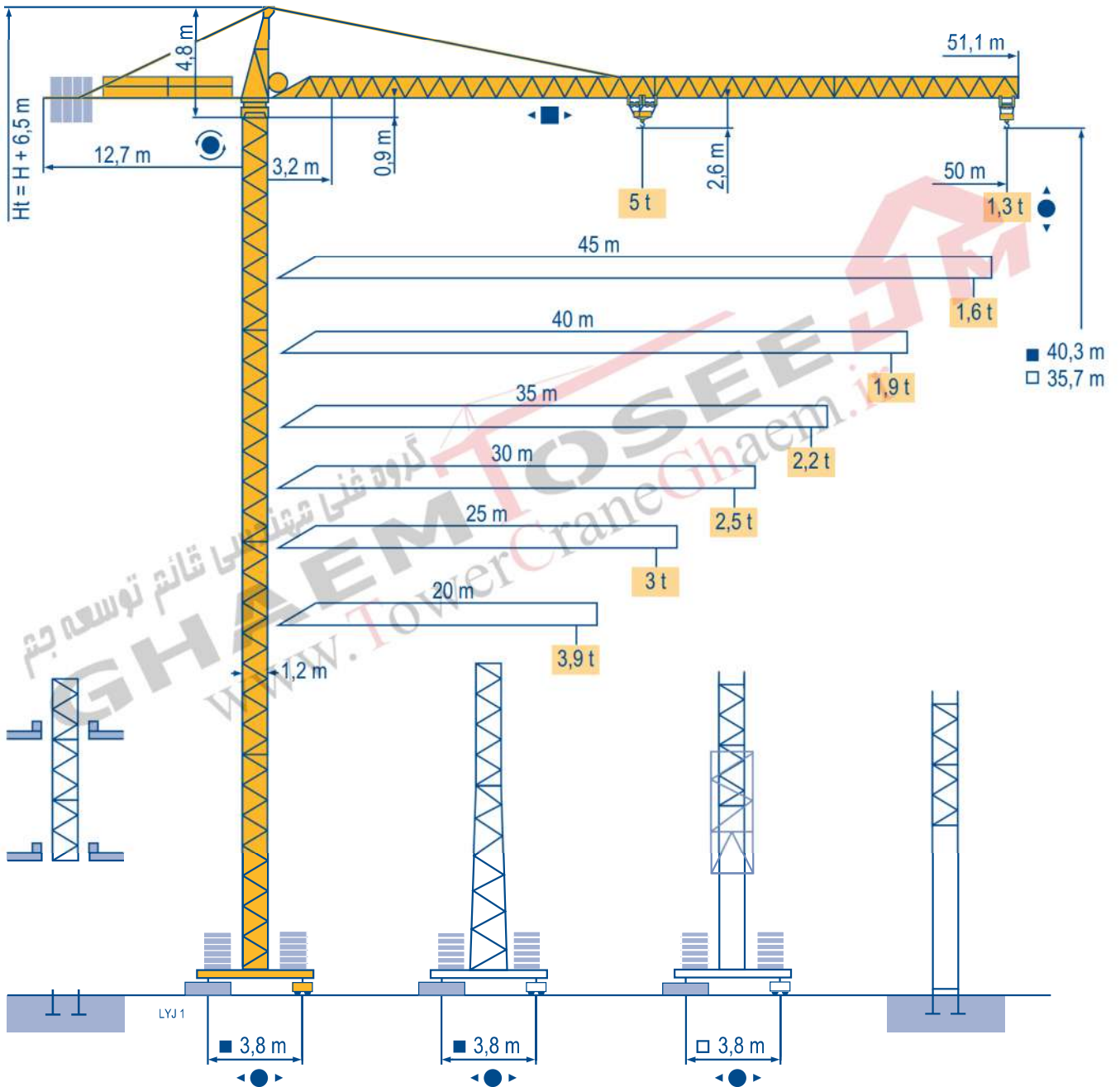


POTAIN

MC 85 B

گروه غنی مهندسی قائم توسعه جیم
GHAEM TOSEE 
www.TowerCraneGhaem.ir



CITY CRANE

 FEM 1.001-A3

Mat / Réactions □ 1,2 m

Maste /
Eckdrücke

20 m → 50 m

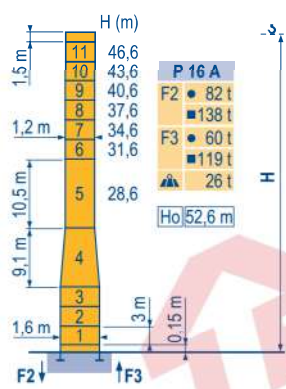
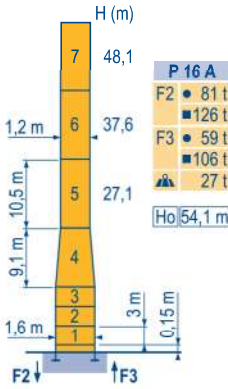
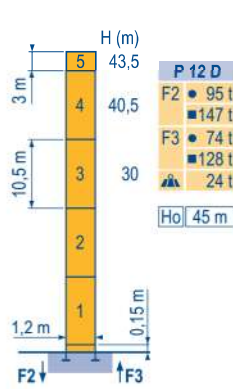
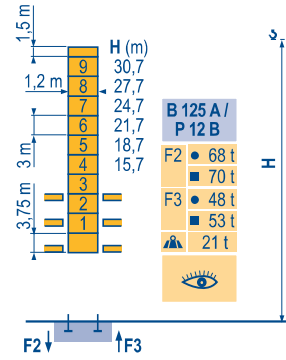
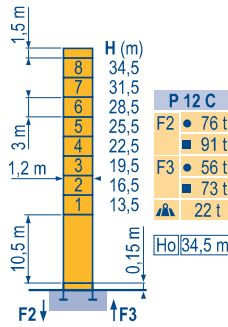
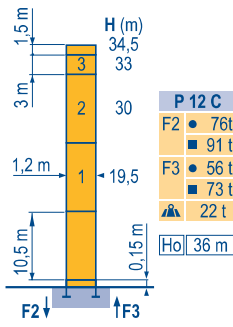
Masts /
Reactions

Mástil /
Reacciones

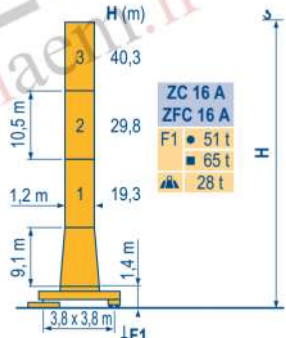
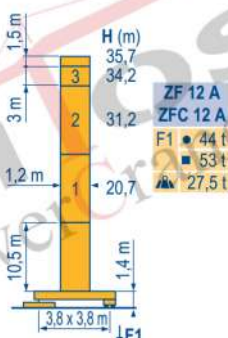
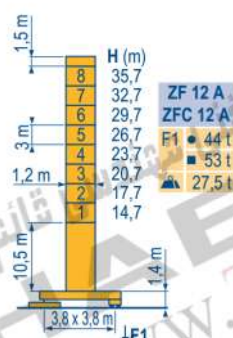
Torre / Reazioni

Tramo /
Reações

LV.2



□ 1,2 m
20 m → 50 m



ZF - ZC - ZFC



CITY CRANE
MC 85 B

گروه غايم تهنيديسا قائم توبسه جم
GHAEM TOSEE
www.TowerCraneGhaem.ir

POTAIN

F	D	GB	E	I	P
● Réactions en service	● Reaktionskräfte in Betrieb	● Reactions in service	● Reacciones en servicio	● Reazioni in servizio	● Reações em serviço
● Réactions hors service	● Reaktionskräfte außer Betrieb	● Reactions out of service	● Reacciones fuera de servicio	● Reazioni fuori servizio	● Reações fora de serviço
👤 A vide sans lest (ni train de transport) avec flèche et hauteur maximum.	👤 Ohne Last, Ballast (und Transportachse), mit Maximalausleger und Maximalhöhe.	👤 Without load, ballast (or transport axes), with maximum jib and maximum height.	👤 Sin carga, sin lastre, (ni tren de transporte), flecha y altura máxima.	👤 A vuoto, senza zavorra (ne assali di trasporto) con braccio massimo e altezza massima.	👤 Sem carga (nem trem de transporte)- sem lastro com lança e altura máximas.
Ho H sans cabine	Ho H Ohne Fahrerhaus	H without cab	H sin cabina	H senza cabina	H sem cabine

Courbes de charges

Lastkurven

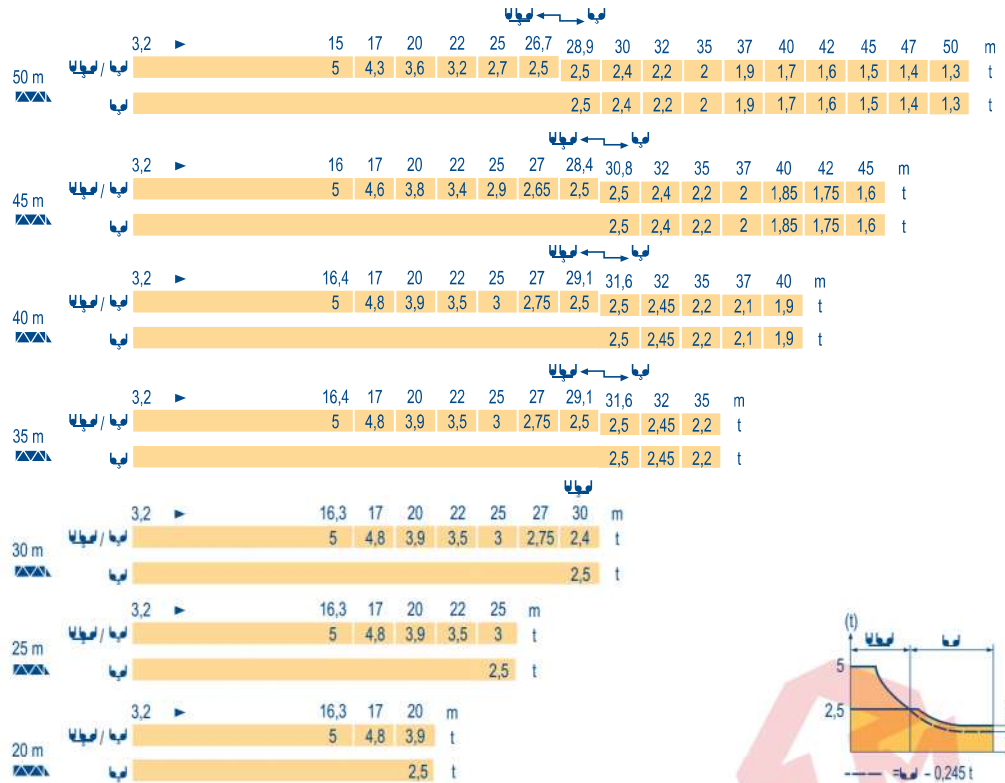
Load diagrams

Curvas de cargas

Curve di carico

Curva de cargas

LV1



Télescopage sur dalles

Kletterkrane im Gebäude

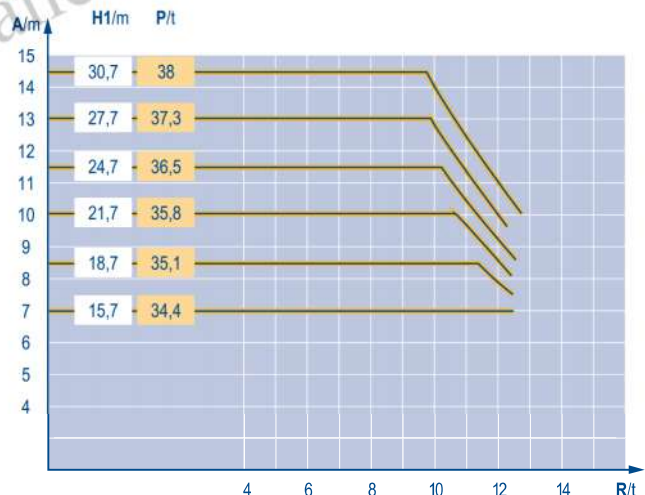
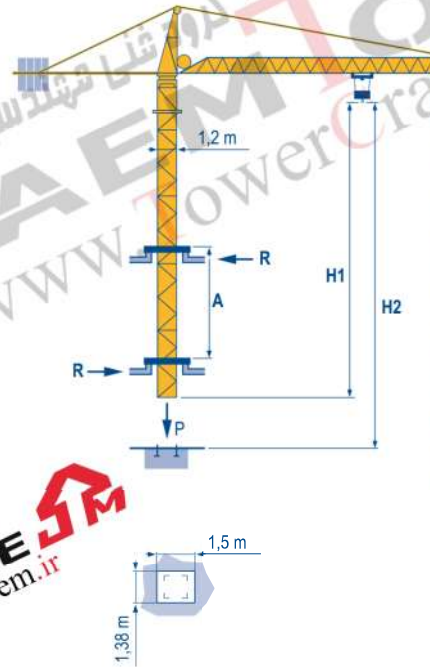
Climbing crane

Telescopage gruas trepadoras

Gru in cavedio

Telescopagem sobre lages

LV2



B 125 A

مگروه غنا مهندسی قائم توسعه جیم
GHAEM TOSEE
 www.TowerCraneGhaem.ir

CITY CRANE
MC 85 B



	F	D	GB	E	I	P
A	Distance entre cadres	Abstand zwischen den Rahmen	Distance between collars	Distancia entra marcos	Distanza fra i telai	Distância entre quadros
H1	Hauteur grue	Kranhöhe	Crane height	Altura grúa	Altezza gru	Altura da grua
P	Poids de la grue(en service)	Krangewicht (in Betrieb)	Crane weight (in service)	Peso de la grúa (en servicio)	Peso della gru (in servizio)	Peso da grua (em serviço)
R	Réaction horizontale	Horizontalkräfte	Horizontal reaction	Reaccion horizontal	Reazione orizzontale	Reacção horizontal
	Voir télescopage sur dalles	Siehe Kletterkrane im Gebäude	See climbing crane	Veja grua trepadora	Consultare gru in cavedio	Ver telescopagem sobre lages

Mécanismes
Antriebe
Mechanisms
Mecanismos
Meccanismi
Mecanismos

LVJ 2

گروه فنی مهندسی قائم توسعه جم
GHAEM TOSEE
www.TowerCraneGhaem.ir

			↔			↕			ch - PS hp	kW	
↕	15 PC 13-6	m/min	7,2	21,5	43	3,6	11	21,5	15	11	185 m
		t	2,5	2,5	1,3	5	5	2,6			
↕	25 PC 13-8	m/min	8,2	33	66	4,1	16,5	33	25	18	323 m
		t	2,5	2,5	1,3	5	5	2,6			
↕	20 LVF 13	m/min	5 → 28,4 → 52,6 → 69			2,5 → 14,4 → 26,3 → 34,5			20	15	323 m
		t	2,5	2,5	1,3	0,65	5	5			
↔	4 D3 V3	m/min	15 - 30 - 58						4	3	
↻	RCV 60	tr/min U/min rpm	0 → 0,8						8	6	
ZF 	TVD 324	m/min	26						2 x 4	2 x 2,9	
ZC - ZFC 	RT 224	m/min	25						2 x 4	2 x 2,9	
CEI 38			IEC 38			kVA					
400 V (+6% -10%) 50 Hz						15 PC : 30 kVA 25 PC : 35 kVA 20 LVF : 30 kVA					

F	D	GB	E	I	P
Levage	Heben	Hoisting	Elevación	Sollevamento	Elevação
Distribution	Katzfahren	Trolleying	Distribución	Distribuzione	Distribuição
Orientation	Schwenken	Slewing	Orientación	Rotazione	Rotação
Transtation	Kranfahren	Travelling	Traslación	Traslazione	Translação

Document commercial non contractuel. Pour toute information technique se référer à la notice correspondante. Unverbindliches Vertriebsdokument. Für technische Informationen, siehe die entsprechenden Anweisungen. This commercial document is not legally binding. For any technical information, please refer to the corresponding instructions. Documento comercial no contractuel. Para cualquier información técnica, ver la noticia correspondiente. Documento commerciale non vincolante, per tutte le informazioni tecniche fare riferimento al catalogo istruzioni. Documento comercial não contratual. Para qualquer informação técnica complementar consultar as respectivas instruções.

Manitowoc
Crane CARE

POTAIN
Manitowoc Crane Group

دفتر تهران: خیابان پاسداران-خیابان شهید کلاهدوز(دولت) بین چهارراه قنات و کوه
روبروی خیابان مطهری-شماره 276 واحد 1
تلفن: 021-22766748 نمابر: 021-22766747

نمایشگاه و انبار سلفچگان: کیلومتر 45 جاده قم، دلیجان
منطقه ویژه ی اقتصادی سلفچگان

دفتر مرکزی و کارخانه: منطقه صنعتی دولت آباد فرعی اول، جامی 2
قائم توسعه جم تلفن: 031-95024603-6, 031-45836808

همراه: 0913 311 4603 رضایی



Americas
Tel : +1 888 479 7278
Tel : +1 717 593 2000

Europe - Middle East - Africa
Tel : +33 (0) 4 72 81 50 00
Tel : +44 (0) 191 522 2000

Asia - Pacific
Tel : +65 6264 1188
Fax : +65 6862 4040

www.manitowoccrane.com

18, rue de Charbonnières - B.P.173
69132 ECULLY Cedex - France

Tél : +33 (0) 4 72 18 20 20
Fax : +33 (0) 4 72 18 20 00
www.manitowoccrane.com

CITY CRANE MC 85 B
Code D-91985-54_Réf. 2003 48 LVJ 5

Copyright.Reproduction interdite © POTAIN 2003

Réalisation Sedoc