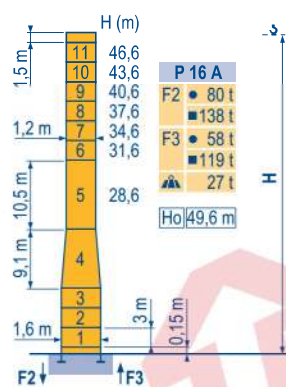
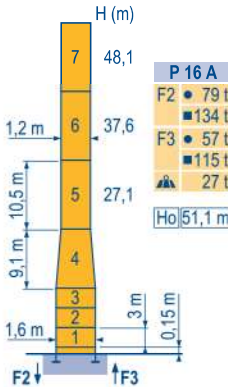
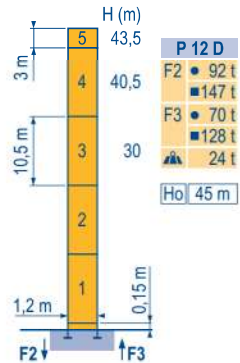
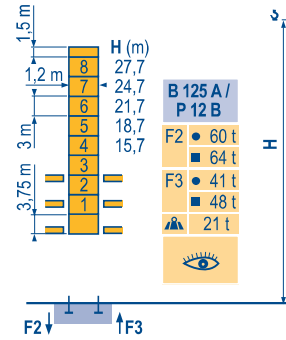
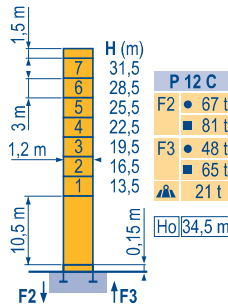
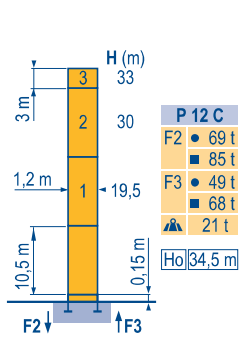


گروه غیا مهندسی قائم توسعه جیم
GHAEM TOSEE Tower Crane
 www.TowerCraneGhaem.ir

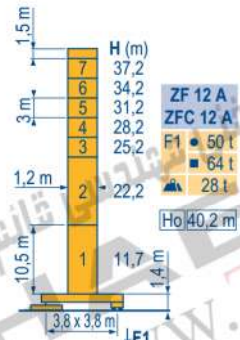
Mat / Réactions \square 1,2 m

Maste /
Eckdrücke
Masts /
Reactions
Mástil /
Reacciones
Torre / Reazioni
Tramo /
Reacções

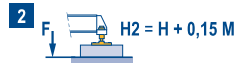
MBL 2



\square 1,2 m
20 m \Rightarrow 50 m



ZF - ZC - ZFC



CITY CRANE
MC 78



F	D	GB	E	I	P
● Réactions en service ■ Réactions hors service ▲ A vide sans lest (ni train de transport) avec flèche et hauteur maximum. Ho H sans cabine	● Reaktionskräfte in Betrieb ■ Reaktionskräfte außer Betrieb ▲ Ohne Last, Ballast (und Transportachse), mit Maximalausleger und Maximalhöhe. Ho Ohne Fahrerhaus	● Reactions in service ■ Reactions out of service ▲ Without load, ballast (or transport axles), with maximum jib and maximum height. H without cab	● Reacciones en servicio ■ Reacciones fuera de servicio ▲ Sin carga, sin lastre, (ni tren de transporte), flecha y altura máxima. H sin cabina	● Reazioni in servizio ■ Reazioni fuori servizio ▲ A vuoto, senza zavorra (ne assali di trasporto) con braccio massimo e altezza massima. H senza cabina	● Reacções em serviço ■ Reacções fora de serviço ▲ Sem carga (nem trem de transporte)- sem lastro com lança e altura máximas. H sem cabine

Courbes de charges

Lastkurven

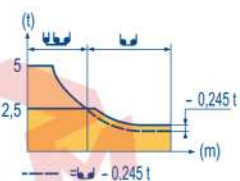
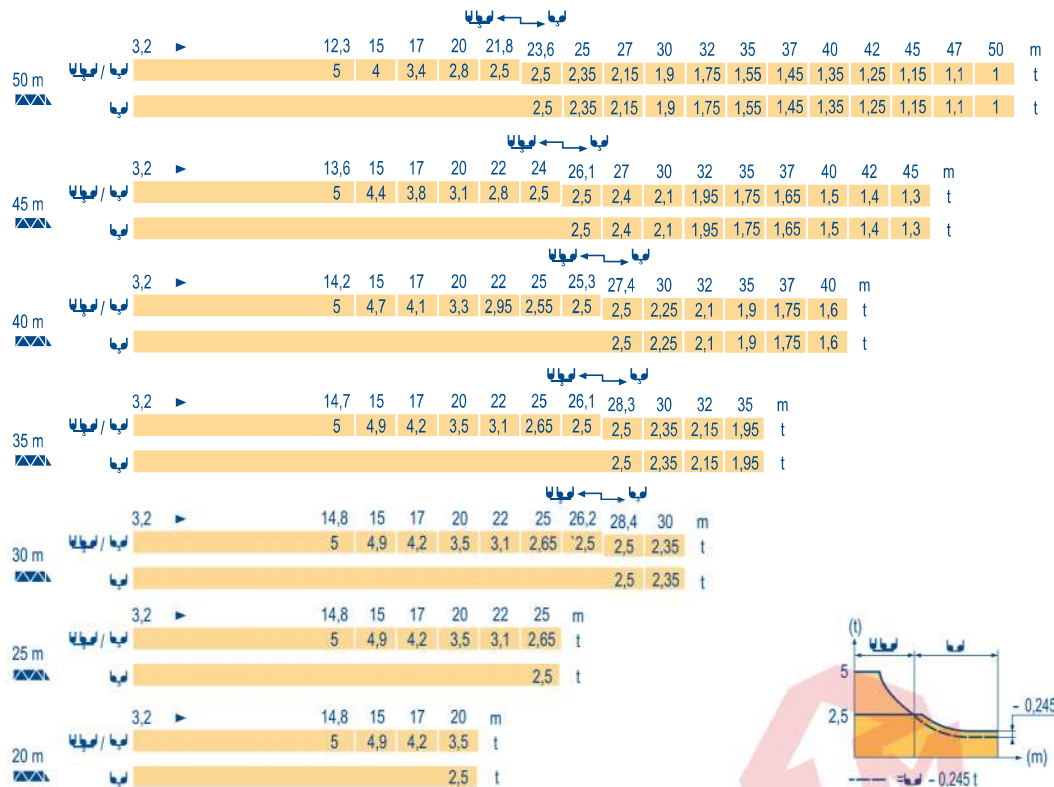
Load diagrams

Curvas de cargas

Curve di carico

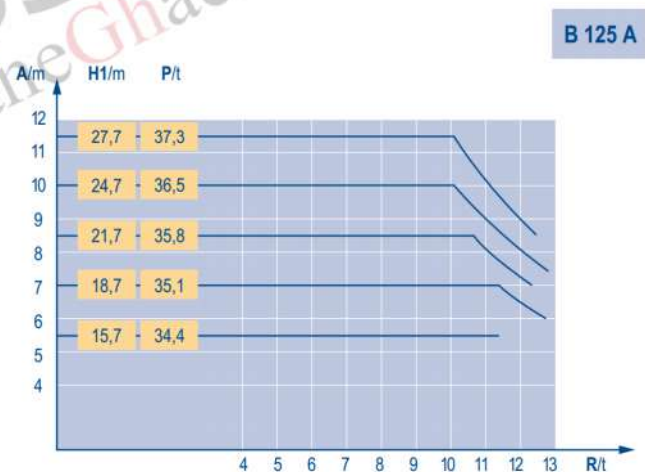
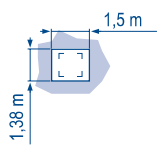
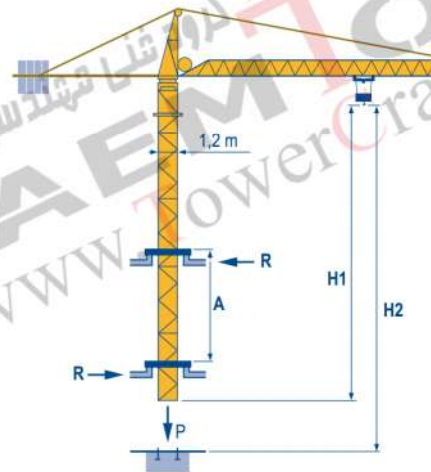
Curva de cargas

MBL 1



Télescopage sur dalles
Kletterkrane im Gebäude
Climbing crane
Telescopage gruas trepadoras
Gru in cavedio
Telescopagem sobre lages

MBL 1



B 125 A

CITY CRANE
MC 78



	F	D	GB	E	I	P
A	Distance entre cadres	Abstand zwischen den Rahmen	Distance between collars	Distancia entra marcos	Distanza fra i telai	Distância entre quadros
H1	Hauteur grue	Kranhöhe	Crane height	Altura grúa	Altezza gru	Altura da grua
P	Poids de la grue(en service)	Krangewicht (in Betrieb)	Crane weight (in service)	Peso de la grúa (en servicio)	Peso della gru (in servizio)	Peso da grua (em serviço)
R	Réaction horizontale	Horizontalkräfte	Horizontal reaction	Reaccion horizontal	Reazione orizzontale	Reacção horizontal
	Voir télescopage sur dalles	Siehe Kletterkrane im Gebäude	See climbing crane	Veja grua trepadora	Consultare gru in cavedio	Ver telescopagem sobre lages

Mécanismes
 Antriebe
 Mechanisms
 Mecanismos
 Meccanismi
 Mecanismos

MBL 2

			U			UU			ch - PS hp	kW			
▲ ▼	15 PC 13-6	m/min t	7,2 2,5	21,5 2,5	43 1,3	3,6 5	11 5	21,5 2,6	15	11	185 m		
	25 PC 13-8	m/min t	8,2 2,5	33 2,5	66 1,3	4,1 5	16,5 5	33 2,6					
▲ ▼	20 LVF 13	m/min t	5 → 28,4 → 52,6 → 69 2,5	2,5	1,3	0,65	2,5 → 14,4 → 26,3 → 34,5 5	5	2,6	1,3	20	15	323 m
	4 D3 V3	m/min	15 - 30 - 58						4	3			
	RCV 60	tr/min U/min rpm	0 → 0,8						8	6			
ZF 	TVD 324	m/min	26						2 x 4	2 x 2,9			
ZC - ZFC 	RT 224	m/min	25						2 x 4	2 x 2,9			
CEI 38			IEC 38			kVA							
400 V (+6% -10%) 50 Hz						15 PC : 30 kVA 25 PC : 35 kVA 20 LVF : 30 kVA							

F	D	GB	E	I	P
Levage	Heben	Hoisting	Elevación	Sollevamento	Elevação
Distribution	Katzfahring	Trolleying	Distribución	Distribuzione	Distribuição
Orientation	Schwenken	Slewing	Orientación	Rotazione	Rotação
Translation	Kranfahren	Travelling	Traslación	Traslazione	Translação

Document commercial non contractuel. Pour toute information technique se référer à la notice correspondante. Unverbindliches Vertriebsdokument. Für technische Informationen, siehe die entsprechenden Anweisungen. This commercial document is not legally binding. For any technical information, please refer to the corresponding instructions. Documento commercial no contractuel. Para cualquier información técnica, ver la noticia correspondiente. Documento commerciale non vincolante, per tutte le informazioni tecniche fare riferimento al catalogo istruzioni. Documento comercial não contratual. Para qualquer informação técnica complementar consultar as respectivas instruções.

Manitowoc
 Crane CARE

POTAIN
 Manitowoc Crane Group

دفتر تهران: خیابان پاسداران-خیابان شهید کلاهدوز (دولت) بین چهارراه قنات و کاوه
 روبروی خیابان مطهری-شماره 276 واحد 1
 تلفن: 021-22766747 شماره: 021-22766748
 نمایشگاه و انبار سلفچگان: کیلومتر 45 جاده قم، دلیجان
 منطقه ویژه ی اقتصادی سلفچگان
 دفتر مرکزی و کارخانه: منطقه صنعتی دولت آباد-فرعی اول، جامی 2
 قائم توسعه جم تلفن : 031-95024603-6 , 031-45836808
 همراه : 0913 311 4603 رضایی

Americas
 Tel : +1 888 479 7278
 Tel : +1 717 593 2000

Europe - Middle East - Africa
 Tel : +33 (0) 4 72 81 50 00
 Tel : +44 (0) 191 522 2000

Asia - Pacific
 Tel : +65 6264 1188
 Fax : +65 6862 4142
 www.manitowoccrane.com

18, rue de Charbonnières - B.P.173
 69132 ECULLY Cedex - France
 Tél. : +33 (0) 4 72 18 20 20
 Fax. : +33 (0) 4 72 18 20 00
 www.manitowoccrane.com

CITY CRANE MC 78
 Réf. 2004 39 MBL 3

Copyright.Reproduction interdite © POTAIN 2004