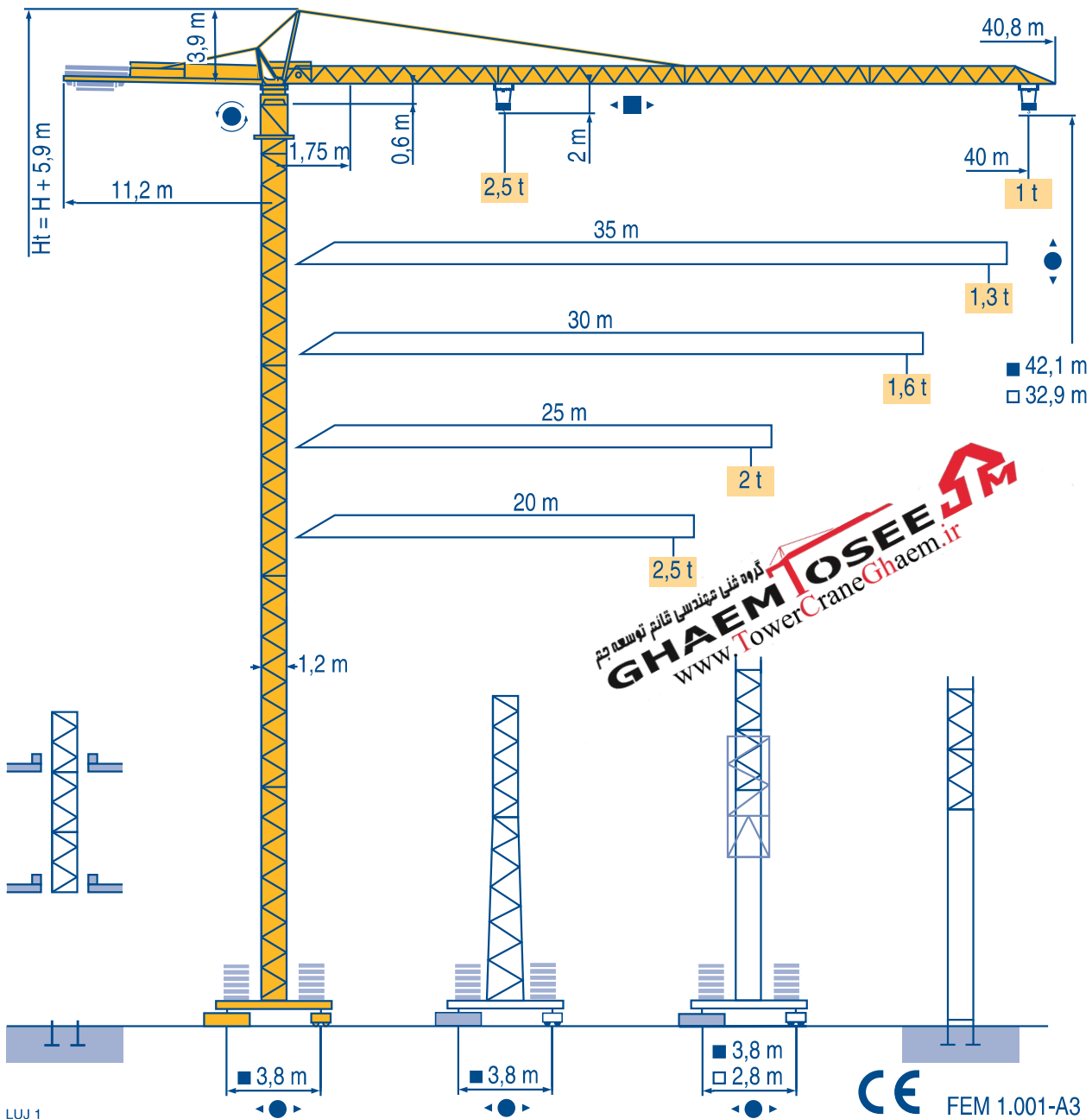


CITY CRANE MC 50 B



Igo
HD
HDM



HDT



GTMR



CITY CRANE



TOPKIT MD
MAXI MD



MAXI TOPKIT



Topless MDT



MR



گروه فنی مهندسی قائم توسعه پتاین
GHAEM TOSEE
 www.TowerCraneGhaem.ir

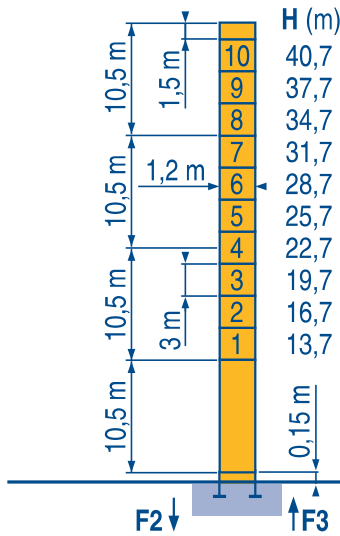


POTAIN 



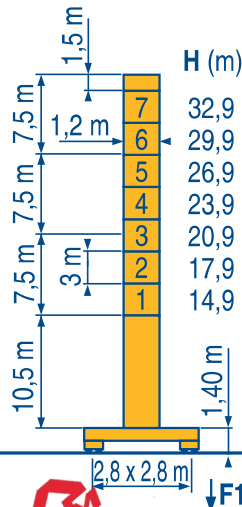
1,2 m

20 m → 40 m



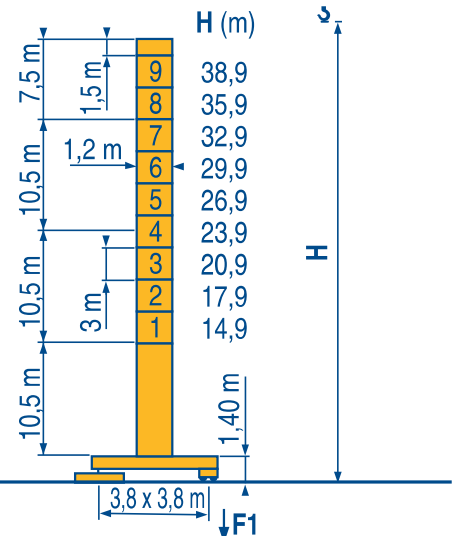
P 12 C

F2	● 60 t	■ 111 t
F3	● 47 t	■ 99 t
▲	15,5 t	



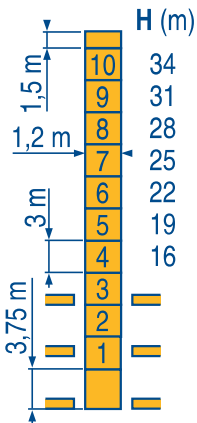
ZE 12 A

F1	● 40 t	■ 57 t
▲	18 t	

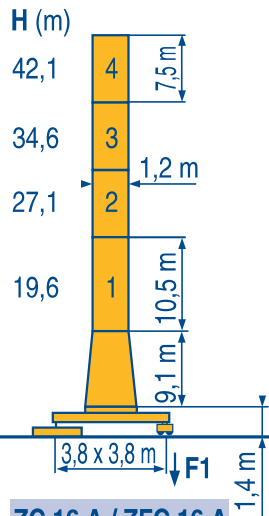


ZF 12 A / ZFC 12 A

F1	● 38 t	■ 54 t
▲	20,5 t	

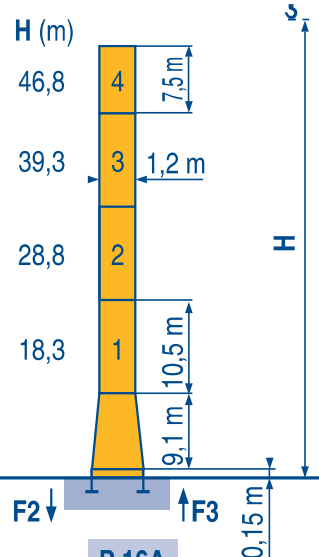


B 125 A / P 12 B



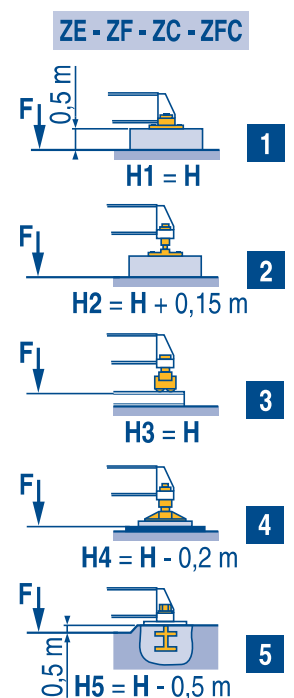
ZC 16 A / ZFC 16 A

F1	● 42 t	■ 64 t
▲	23 t	



P 16 A

F2	● 52 t	■ 103 t
F3	● 39 t	■ 91 t
▲	19 t	



LUJ 2

F Voir télescopage sur dalles
● Réactions en service
■ Réactions hors service
▲ A vide sans lest (ni train de transport) avec flèche et hauteur maximum.

D Siehe Kletterkrane im Gebäude
● Reaktionskräfte in Betrieb
■ Reaktionskräfte außer Betrieb
▲ Ohne Last, Ballast (und Transportachse), mit Maximalausleger und Maximalhöhe.

GB See climbing crane
● Reactions in service
■ Reactions out of service
▲ Without load, ballast (or transport axles), with maximum jib and maximum height.

E Vea grua trepadora
● Reacciones en servicio
■ Reacciones fuera de servicio
▲ Sin carga, sin lastre, (ni tren de transporte), flecha y altura máxima.

I Consultare gru in cavedio
● Reazioni in servizio
■ Reazioni fuori servizio
▲ A vuoto, senza zavorra (ne assali di trasporto) con braccio massimo e altezza massima.

P Ver telescopagem sobre lages
● Reações em serviço
■ Reações fora de serviço
▲ Sem carga (nem trem de transporte)-sem lastro com lança e altura máximas.

Courbes de charges
Lastkurven



Load diagrams
Curvas de cargas



Curve di carico
Curva de cargas



40 m	1,75 ▶	18,6	20	22	25	27	30	32	35	37	40 m
		2,5	2,3	2,1	1,78	1,62	1,43	1,32	1,18	1,1	1 t
35 m	1,75 ▶	20,1	22	25	27	30	32	35 m			
		2,5	2,25	1,95	1,78	1,57	1,45	1,3 t			
30 m	1,75 ▶	20,5	22	25	27	30 m					
		2,5	2,3	1,98	1,81	1,6 t					
25 m	1,75 ▶	20,6	22	25 m							
		2,5	2,3	2 t							
20 m	1,75 ▶	20 m									
		2,5 t									

LWJ 1

Télescopage sur dalles
Kletterkrane im Gebäude



Climbing crane
Telescopage gruas trepadoras

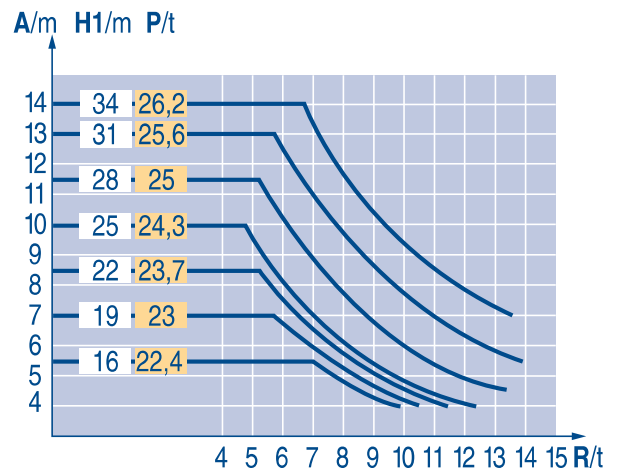
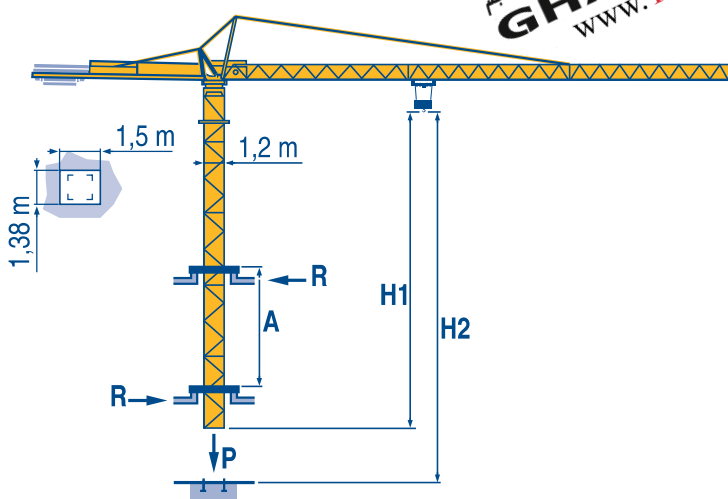


Gru in cavedio
Telescopagem sobre lages



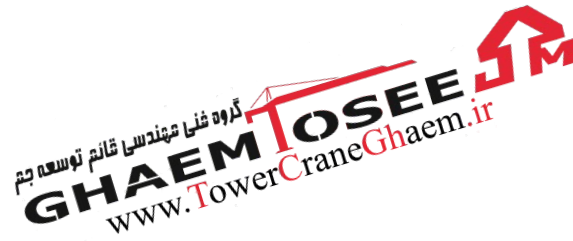
گروه غنی مهندسی قائم توسعه جم
GHAEM TOSEE
www.TowerCraneGhaem.ir

B 125 A



LWJ1

A	Distance entre cadres	F	Abstand zwischen den Rahmen	D	Distance between collars	GB	Distancia entre marcos	E	Distanza fra i telai	I	Distância entre quadros	P
H1	Hauteur grue		Kranhöhe		Crane height		Altura grúa		Altezza gru		Altura da grua	
P	Poids de la grue (en service)		Krangewicht (in Betrieb)		Crane weight (in service)		Peso de la grúa (en servicio)		Peso della gru (in servizio)		Peso da grua (em serviço)	
R	Réaction horizontale		Horizontalkräfte		Horizontal reaction		Reaccion horizontal		Reazione orizzontale		Reacção horizontal	



					ch - PS hp	kW		
	15 PC 13-5	m/min	7,1	21	42	15	11	130 m
		t	2,5	2,5	1,3			
	25 PC 13-7	m/min	7,9	31,5	63	25	18	229 m
		t	2,5	2,5	1,3			
	3 D2 V5	m/min	21 - 42			3	2,2	
	RCV 40	tr/min U/min rpm	0 → 0,8			6	4,5	
	ZE - ZF TVD 324	m/min	26			2 x 4	2 x 2,9	
	ZC - ZFC RT 224	m/min	25			2 x 4	2 x 2,9	

CEI 38	IEC 38	kVA	
400 V (+6% -10%) 50 Hz		15 PC : 25 kVA 25 PC : 35 kVA	84/534 - 87/405

LUJ 3

	Levage	F	Heben	D	Hoisting	GB	Elevación	E	Sollevamento	I	Elevação	P
	Distribution		Katzfahren		Trolleying		Distribución		Distribuzione		Distribuição	
	Orientation		Schwenken		Slewing		Orientación		Rotazione		Rotação	
	Translation		Kranfahren		Travelling		Traslación		Traslazione		Translação	
	Conforme aux directives CEE 84/534 et 87/405 sur le niveau acoustique		Gemäss EWG-Richtlinien 84/534 und 87/405 für den Schall-Leistungspegel		In compliance with the EEC 84/534 and 87/405 Instructions on noise level		Conforme con las directivas CEE 84/534 y 87/405 sobre el nivel acustico		Conforme alle direttive CEE 84/534 e 87/405 sul livello acustico		Conforme as directivas CEE 84/534 e 87/405 sobre o nível acústico	



Document commercial non contractuel. Pour toute information technique se référer à la notice correspondante

Unverbindliches Vertriebsdokument. Für technische Informationen, siehe die entsprechenden Anweisungen.

This commercial document is not legally binding. For any technical information, please refer to the corresponding instructions.

Documento commercial non contractuel. Para cualquier información técnica, ver la noticia correspondiente.

Documento commerciale non vincolante, per tutte le informazioni tecniche fare riferimento al catalogo istruzioni

Documento comercial não contratual. Para qualquer informação técnica complementar consultar as respectivas instruções

دفتر تهران: خیابان پاسداران-خیابان شهید کلاهوز (دولت) بین چهارراه قنات و کاوه
روبروی خیابان مطهری-شماره 276 واحد 1
تلفن: 021-22766747 نمابر: 021-22766748

نمایشگاه و انبار سلفچگان: 45 کیلومتر جاده قم، دلیجان
منطقه ویژه ی اقتصادی سلفچگان

دفتر مرکزی و کارخانه: منطقه صنعتی دولت آباد-فرعی اول جامی 2
قائم توسعه جم تلفن: 031-95024603-6, 031-45836808
همراه: 0913 311 4603 رضایی

POTAIN

18.Rue de Charbonnières, B.P. 173
F-69132 ECULLY Cedex
Tél. (33)04.72.18.20.20
Fax (33)04.72.18.20.00
http://www.potain.com
E-mail : mkt@potain.fr



Manitowoc Crane Group

Deutschland
POTAIN GmbH Tel : 06.1.05.70.40
Italia
POTAIN S.p.A. Tel : 0.331.49.33.11
Portugal
POTAIN Portugal Tel : 22.968.08.89
Singapore
MANITOWOC POTAIN PTE LTD Tel : 227.15.50

Copyright.Reproduction interdite © POTAIN 2000

CITY CRANE MC 50 B

Réf. 2000.36 LUJ 6