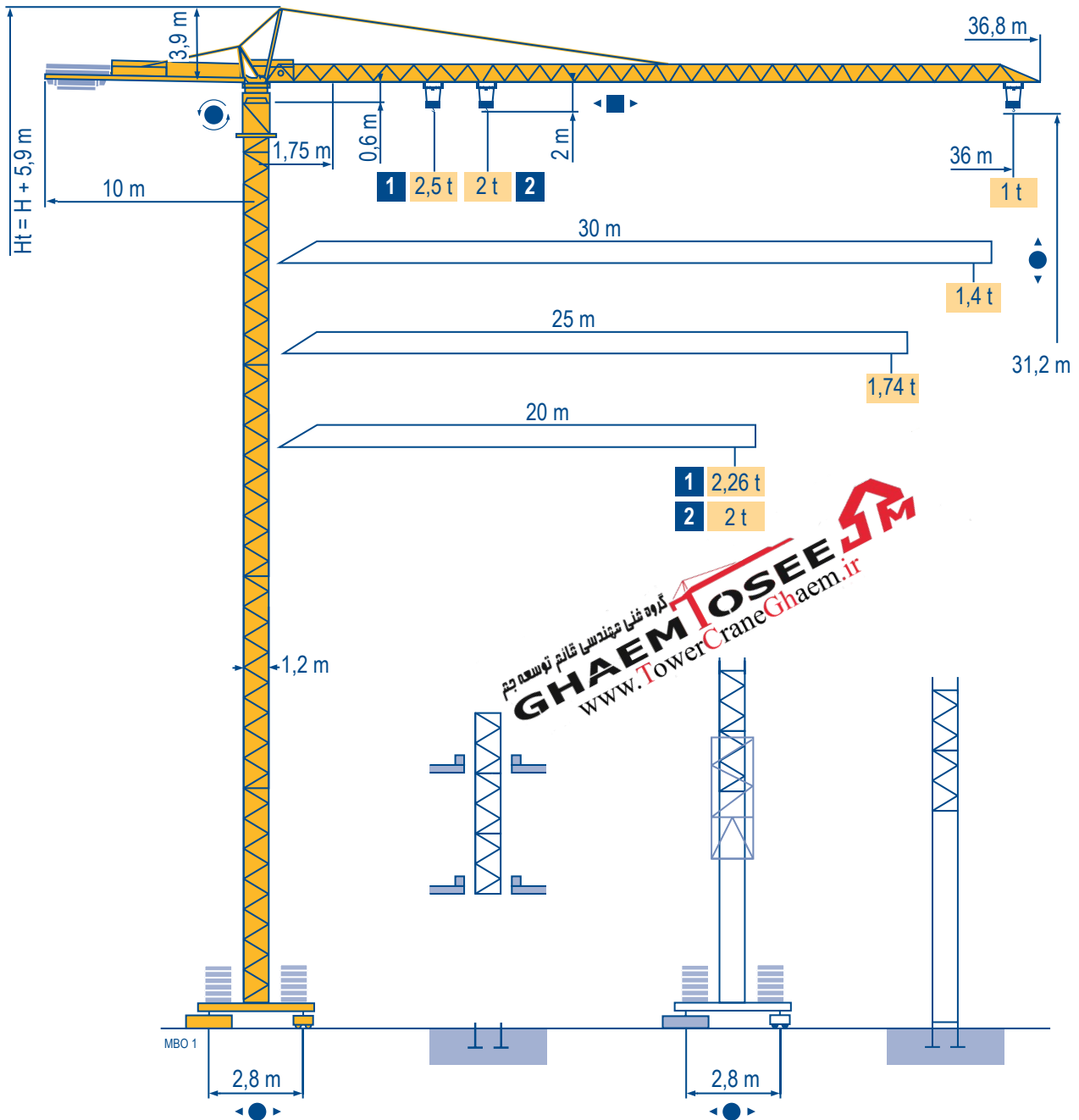


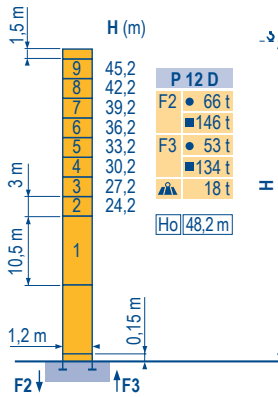
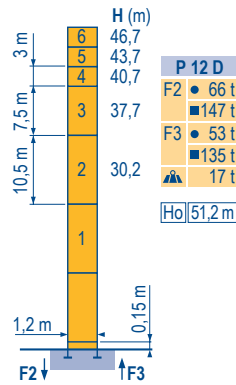
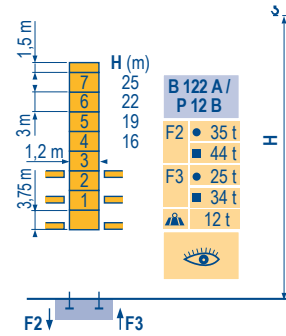
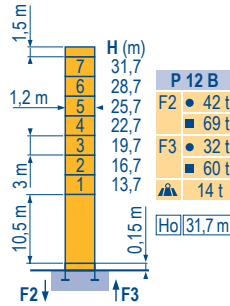
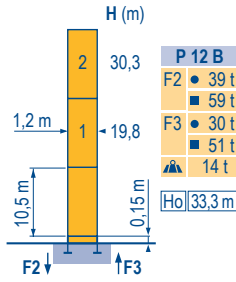
MC 48 C



CITY CRANE

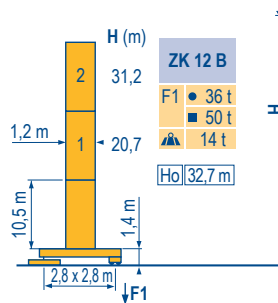
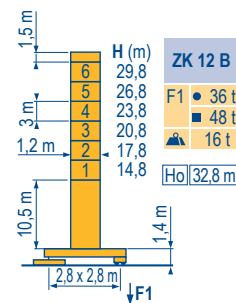
Mat / Réactions □ 1,2 m
 Mast / Eckdrücke ▲
 20 m ⇒ 36 m
 Masts / Reactions
 Mástil / Reacciones
 Torre / Reazioni
 Tramo / Reações

MBO 1

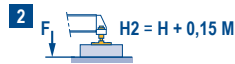


گروه غلما مهندسی قائم تهرسه جم
GHAEM TOSEE
 WWW.TOWERCraneGhaem.ir

□ 1,2 m
 ▲
 20 m ⇒ 36 m



ZK



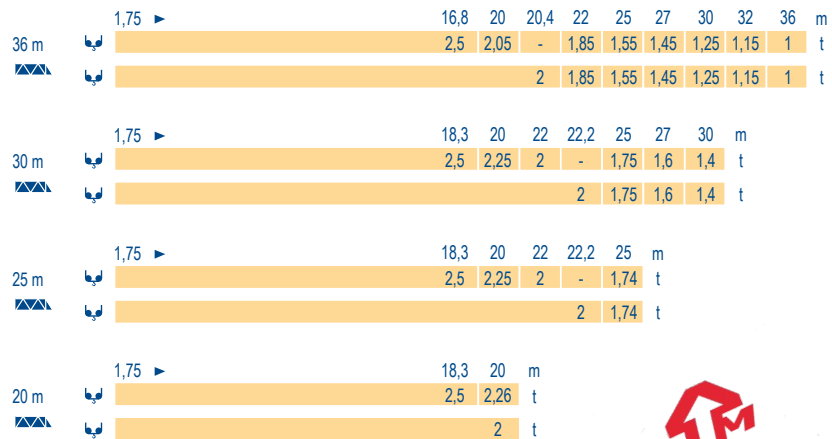
**CITY CRANE
 MC 48 C**



| F | D | GB | E | I | P |
|--|---|--|---|--|--|
| ● Réactions en service | ● Reaktionskräfte in Betrieb | ● Reactions in service | ● Reacciones en servicio | ● Reazioni in servizio | ● Reações em serviço |
| ■ Réactions hors service | ■ Reaktionskräfte außer Betrieb | ■ Reactions out of service | ■ Reacciones fuera de servicio | ■ Reazioni fuori servizio | ■ Reações fora de serviço |
| ▲ A vide sans lest (ni train de transport) avec flèche et hauteur maximum. | ▲ Ohne Last, Ballast (und Transportachse), mit Maximalausleger und Maximalhöhe. | ▲ Without load, ballast (or transport axles), with maximum jib and maximum height. | ▲ Sin carga, sin lastre, (ni tren de transporte), flecha y altura máxima. | ▲ A vuoto, senza zavorra (ne assali di trasporto) con braccio massimo e altezza massima. | ▲ Sem carga (nem trem de transporte)- sem lastro com lança e altura máximas. |
| Ho H sans cabine | Ho H Ohne Fahrerhaus | Ho H without cab | Ho H sin cabina | Ho H senza cabina | Ho H sem cabine |

Courbes de charges
 Lastkurven
 Load diagrams
 Curvas de cargas
 Curve di carico
 Curva de cargas

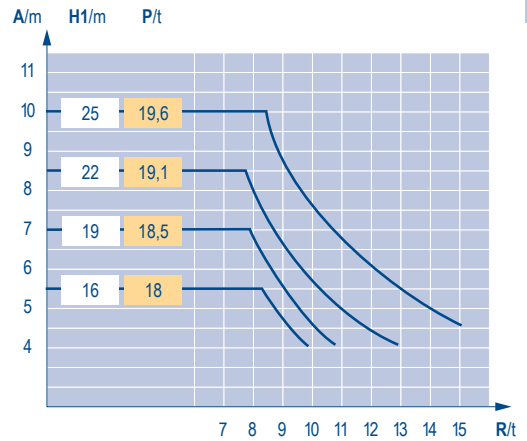
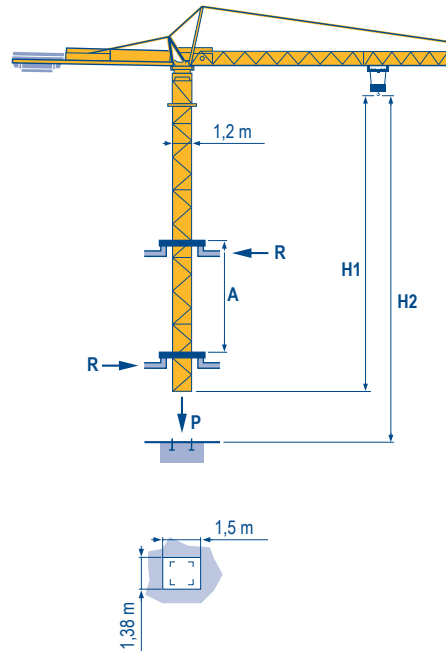
MBO 1



گروه فناوری مهندسی شایم توسعه جنم
GHAEM TOSEE
 WWW.TowerCraneGhaem.ir

Télescopage sur dalles
 Kletterkrane im Gebäude
 Climbing crane
 Telescopage gruas trepadoras
 Gru in cavedio
 Telescopagem sobre lages

MBO 1



B 122 A

CITY CRANE
 MC 48 C

POTAIN

| | F | D | GB | E | I | P |
|-----------|-------------------------------|-------------------------------|---------------------------|-------------------------------|------------------------------|------------------------------|
| A | Distance entre cadres | Abstand zwischen den Rahmen | Distance between collars | Distancia entra marcos | Distanza fra i telai | Distância entre quadros |
| H1 | Hauteur grue | Kranhöhe | Crane height | Altura grúa | Altezza gru | Altura da grua |
| P | Poids de la grue (en service) | Krangewicht (in Betrieb) | Crane weight (in service) | Peso de la grúa (en servicio) | Peso della gru (in servizio) | Peso da grua (em serviço) |
| R | Réaction horizontale | Horizontalkräfte | Horizontal reaction | Reaccion horizontal | Reazione orizzontale | Reacção horizontal |
| | Voir télescopage sur dalles | Siehe Kletterkrane im Gebäude | See climbing crane | Vea grua trepadora | Consultare gru in cavedio | Ver telescopagem sobre lages |

Mécanismes
Antriebe
Mechanisms
Mecanismos
Meccanismi
Mecanismos

MBO 2

| | | | | | ch - PS hp | kW | | |
|-------|---------|------------------------|---------|-----|---------------------------------|-------|---------|-------|
| | 9 RPC | m/min | 6,6 | 20 | 40 | 8,2 | 6 | 115 m |
| | 10-3 | t | 2 | 2 | 1 | | | |
| | 15 PC | m/min | 7,5 | 22 | 45 | 15 | 11 | 229 m |
| | 10-2 | t | 2 | 2 | 1 | | | |
| 15 PC | m/min | 7,1 | 21 | 42 | 15 | 11 | 130 m | |
| 13-5 | t | 2,5 | 2,5 | 1,3 | | | | |
| | 1 D2 V1 | m/min | 18 - 36 | | | 1,2 | 0,9 | |
| | RCV 30 | tr/min U/min rpm | 0 → 0,8 | | | 4 | 3 | |
| | TVD 324 | m/min | 26 | | | 2 x 4 | 2 x 2,9 | |
| | | CEI 38 | IEC 38 | | kVA | | | |
| | | 400 V (+6% -10%) 50 Hz | | | 9 PC : 15 kVA 15 PC : 20 kVA | | | |

| F | D | GB | E | I | P |
|--------------|------------|------------|--------------|---------------|--------------|
| | | | | | |
| Levage | Heben | Hoisting | Elevación | Sollevamento | Elevação |
| Distribution | Katzfahren | Trolleying | Distribución | Distribuzione | Distribuição |
| Orientation | Schwenken | Slewing | Orientación | Rotazione | Rotação |
| Translation | Kranfahren | Travelling | Traslación | Traslazione | Translação |

گروه فناوری مهندسی قائم توسعه جم
GHAEM TOSEE
www.TowerCraneGhaem.ir

| | | | | | | |
|--|--|--|---|--|---|--|
| | Document commercial non contractuel. Pour toute information technique se référer à la notice correspondante. | Unverbindliches Vertriebsdokument. Für technische Informationen, siehe die entsprechenden Anweisungen. | This commercial document is not legally binding. For any technical information, please refer to the corresponding instructions. | Documento comercial non contractuel. Para cualquier información técnica, ver la noticia correspondiente. | Documento commerciale non vincolante, per tutte le informazioni tecniche fare riferimento al catalogo istruzioni. | Documento comercial não contratual. Para qualquer informação técnica complementar consultar as respectivas instruções. |
|--|--|--|---|--|---|--|

دفتر تهران: خیابان پاسداران-خیابان شهید کلاهدوز(دولت)بین چهارراه قنات و کاوه
روبروی خیابان مطهری-شماره 276 واحد 1
تلفن: 021-22766747 نمابر: 021-22766748

نمایشگاه و انبار سلفچگان: کیلومتر 45 جاده قم-دلیجان
منطقه ویژه ی اقتصادی سلفچگان

دفتر مرکزی و کارخانه: منطقه صنعتی دولت آباد-فرعی اول، جامی 2
قائم توسعه جم تلفن: 031-95024603-6, 031-45836808
همراه: 0913 311 4603 رضایی



Americas
Tel : +1 888 479 7278
Tel : +1 717 593 2000

Europe – Middle East – Africa
Tel : +33 (0) 4 72 81 50 00
Tel : +44 (0) 191 522 2000

Asia – Pacific
Tel : +65 6264 1188
Fax : +65 6862 4142

www.manitowoccrane.com

POTAIN

Manitowoc Crane Group

18, rue de Charbonnières - B.R.173
69132 ECULLY Cedex - France

Tél. : +33 (0) 4 72 18 20 20
Fax. : +33 (0) 4 72 18 20 00
www.manitowoccrane.com

CITY CRANE MC 48 C
Réf. 2004 42 MBO 2

Copyright.Reproduction interdite © POTAIN 2004