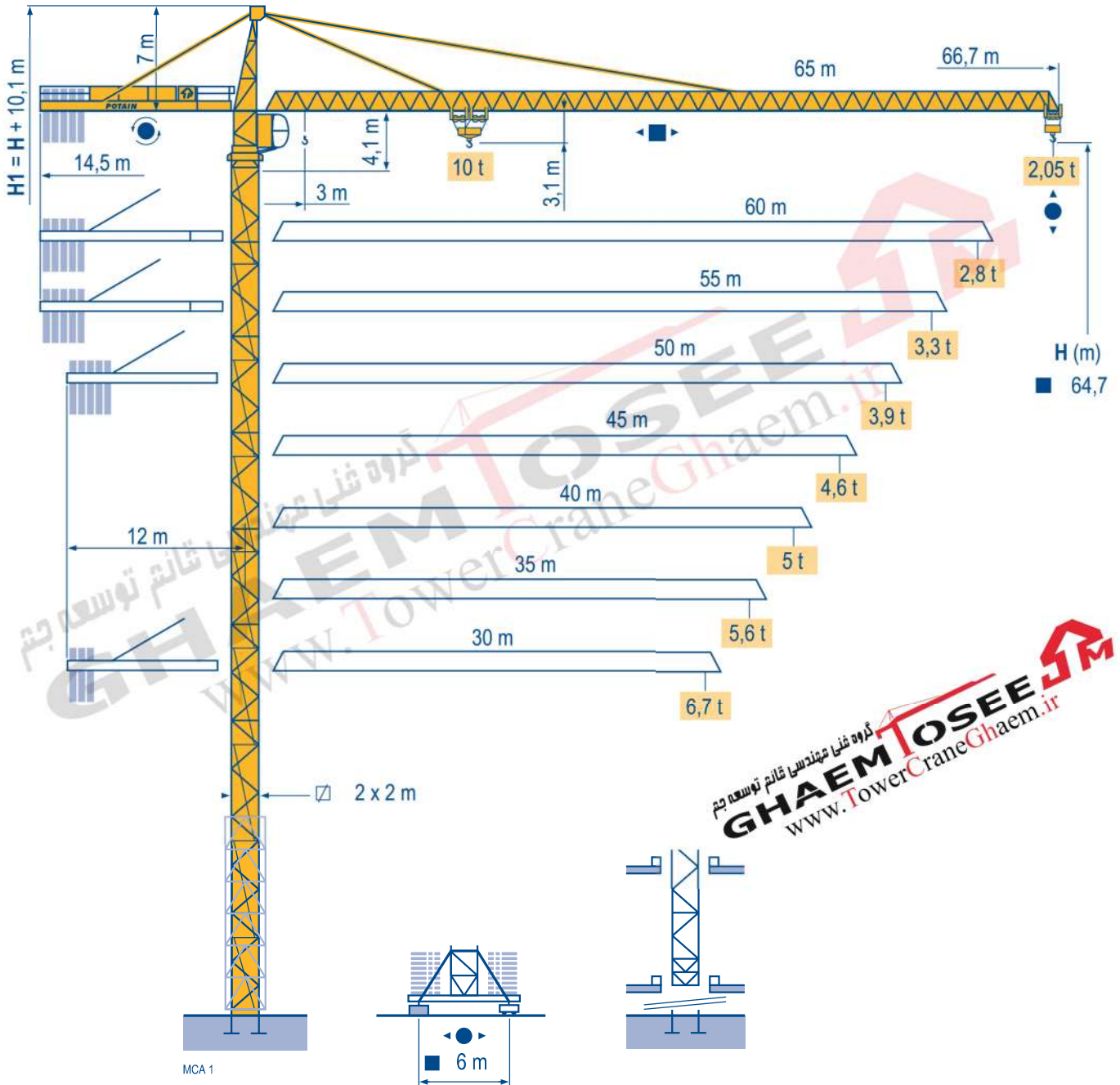


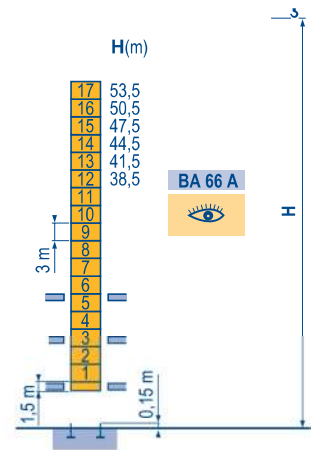
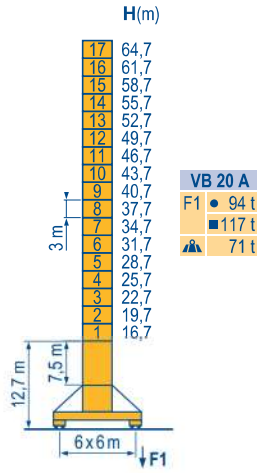
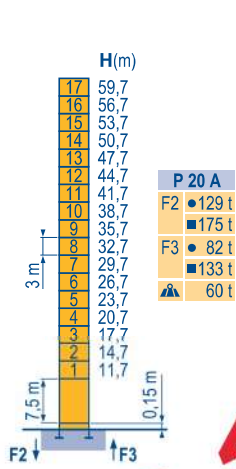
## MC 235 B



Masts / Reactions

□ 2 m  
 ▲ 30 m ⇒ 65 m

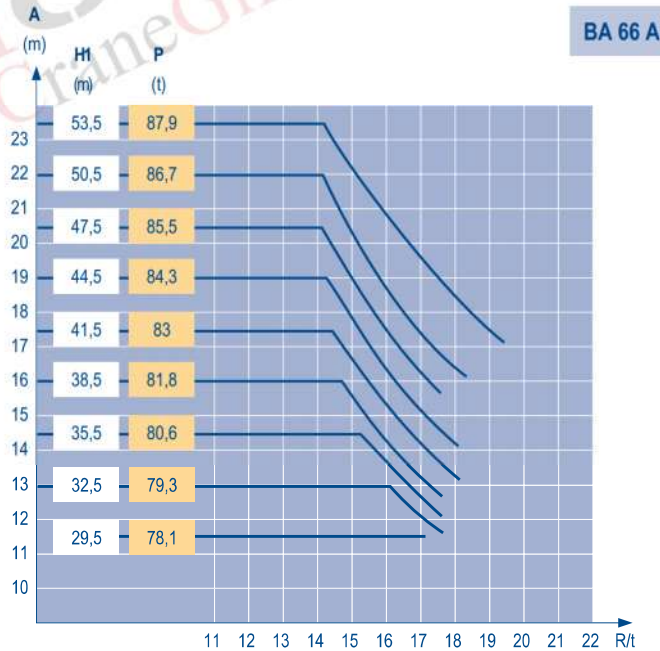
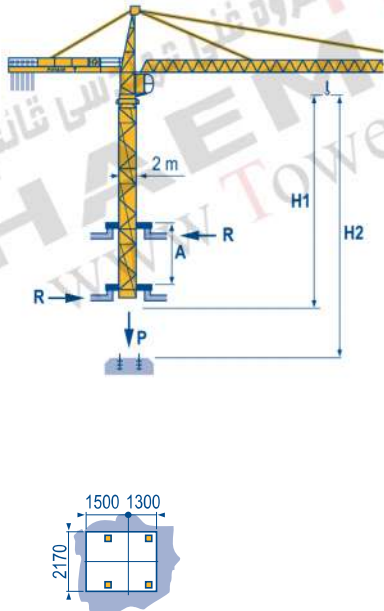
MCA 1



گروه فنی مهندسی قائم توسعه جیم  
**GHAEM TOSEE**  
 www.TowerCraneGhaem.ir

Climbing crane

MCA 1



TOPKIT MC 235 B

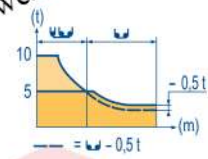
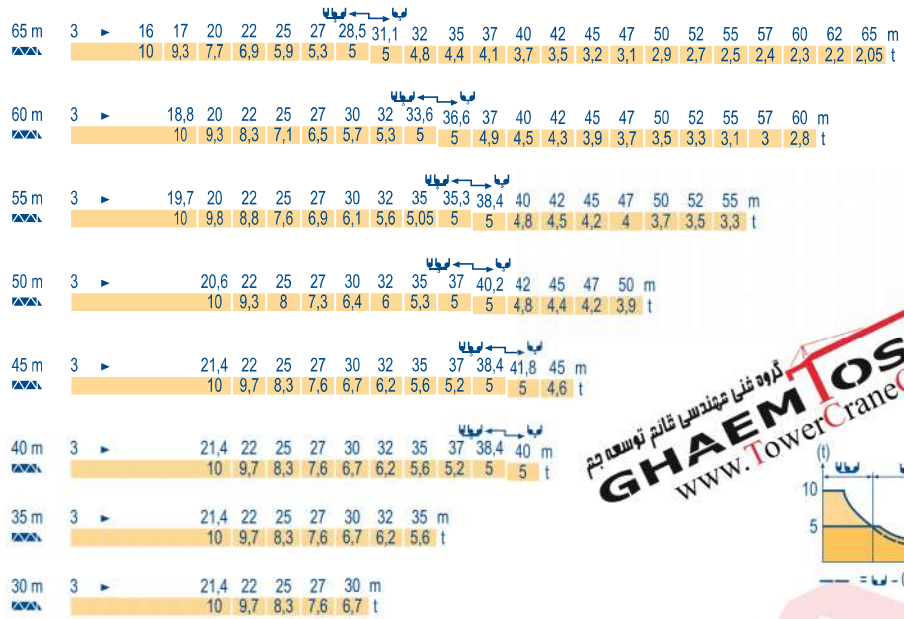


GB

- Reactions in service
- Reactions out of service
- ▲ Without load, ballast (or transport axles), with maximum jib and maximum height.
- 👁 See climbing crane

### Load diagrams

MCA 1



### Counter-jib ballast

MCA 1

Height (m)	Counter-jib length (m)	Ballast weight (kg)
65 m	14,5 m	23 600
60 m	14,5 m	21 700
55 m	14,5 m	20 200
50 m	12 m	23 600
45 m	12 m	21 700
40 m	12 m	19 400
35 m	12 m	16 800
30 m	12 m	14 100

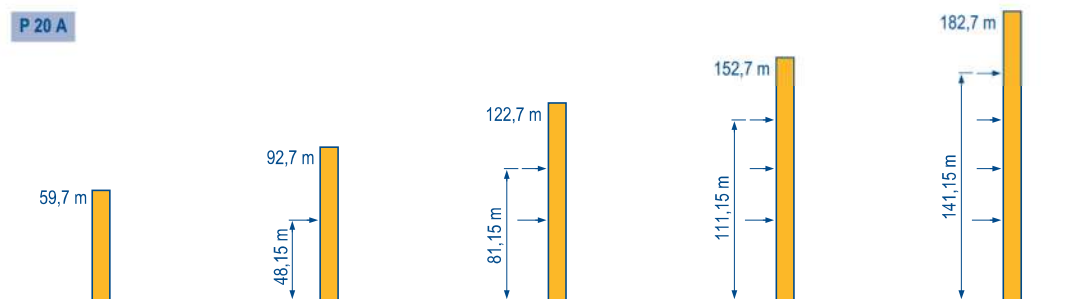
### Base ballast

MCA 1

Height (m)	Weight (t)
64,7	108
61,7	84
58,7	72
55,7	60
52,7	48
49,7	36
46,7	36
43,7	36
40,7	36
37,7	36
34,7	36
31,7	36
28,7	36
25,7	36
22,7	36
19,7	36
16,7	36
13,7	36

### Anchorage

MCA 1



### TOPKIT MC 235 B

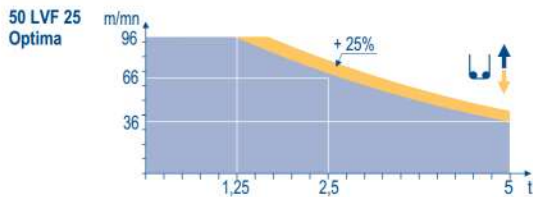


- GB**
- A** Distance between collars
- H1** Crane height
- P** Crane weight (in service)
- R** Horizontal reaction

Mechanisms

MCA 2

			⏏					⏏⏏					hp	kW			
	50 LVF 25 Optima	m/min	3	→ 12	→ 36	→ 46	→ 66	→ 96	1,5	→ 6	→ 18	→ 23	→ 33	→ 48	50	37	557 m
		t	5	5	5	3,75	25	1,25	10	10	10	7,5	5	2,5			
	6 D3 V4	m/min	10 - 50 (10 t) - 100 (5t)										6	4,4			
	RCV 185	rpm	0 → 0,8										2 x 9	2 x 6,6			
	VB 20 A RT 544 A1 2V R ≥ 13 m	m/min	13,5 → 27										4 x 7	4 x 5,2			
CEI 38			IEC 38					kVA									
400 V (+6% -10%) 50 Hz								50 LVF : 75kVA									



GB

- Hoisting
- Trolleying
- Slewing
- Travelling



This commercial document is not legally binding.  
 For any technical information, please refer to the corresponding instructions.

**Manitowoc**  
 Crane CARE

**Manitowoc**  
 Crane Group



Americas

Tel : +1 888 479 7278  
 Tel : +1 717 593 2000

Europe - Middle East - Africa

Tel : +33 (0) 4 72 81 50 00  
 Tel : +44 (0) 191 522 2000

Asia - Pacific

Tel : +65 6264 1188  
 Fax : +65 6862 4040

www.manitowoccrane.com

Manitowoc Crane Group Asia Pte Ltd

Manitowoc Crane Group

4 Kwong Min Road  
 Singapore 628707

Tel: +65 6264 1188  
 Fax: +65 6862 4040

www.manitowoccrane.com

دفتر تهران: خیابان پاسداران-خیابان شهید کلاهدوز (دولت) بین چهارراه قنات و کاوه

روبروی خیابان مطهری-شماره 276 واحد 1  
 تلفن: 021-22766747 نمایر: 021-22766748

نمایشگاه و انبار سلفچگان: کیلومتر 45 جاده قم، دلچیان  
 منطقه ویژه ی اقتصادی سلفچگان

دفتر مرکزی و کارخانه: منطقه صنعتی دولت آبادفرعی اول، جامی 2  
 قائم توسعه جم تلفن: 031-95024603-6 , 031-45836808

همراه: 0913 311 4603 رضایی

**MC 235 B**

Réf. 2004 45 MCA 4

Copyright.Reproduction interdite © POTAIN 2004