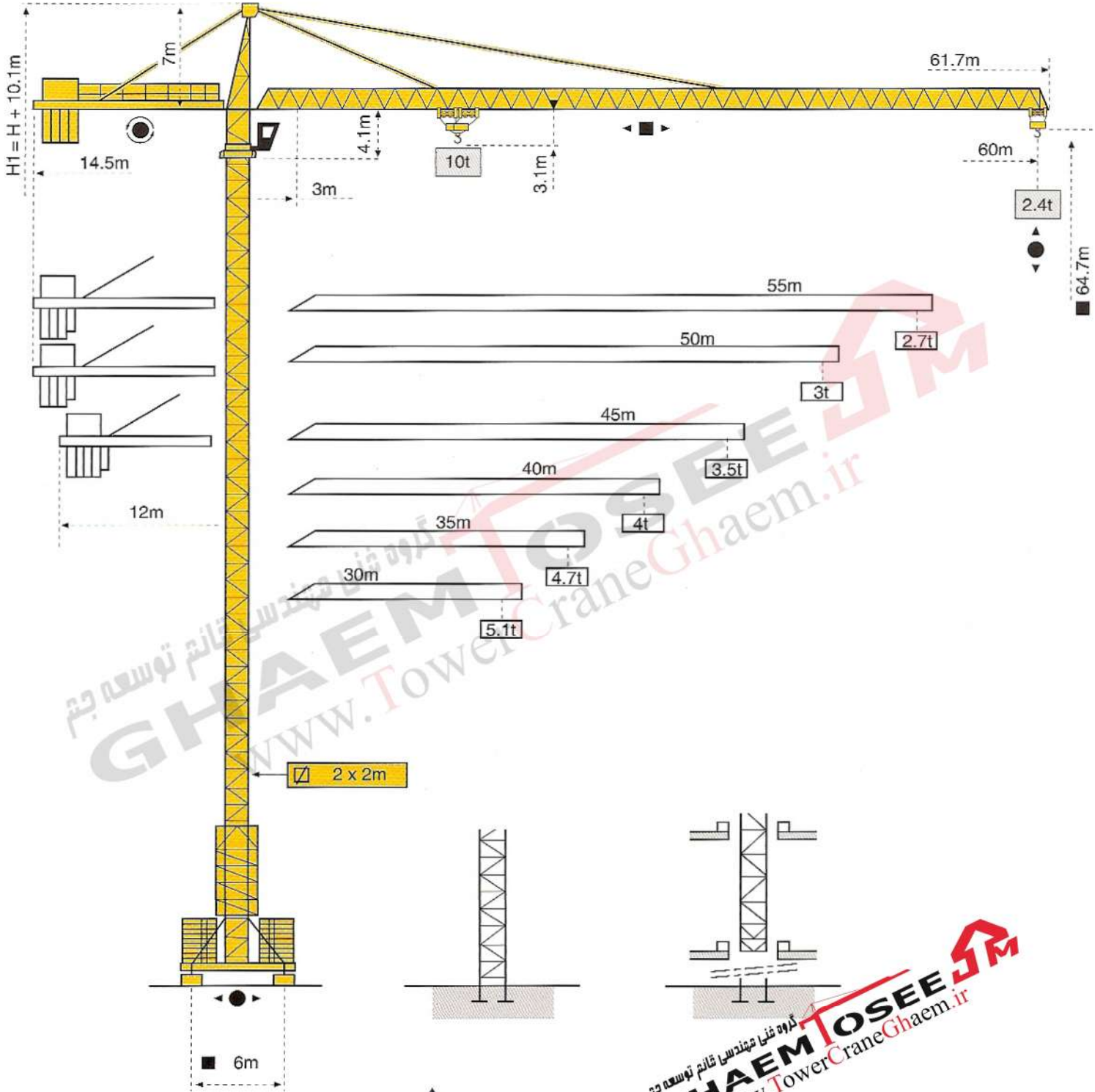


# MC 205B



www.TowerCraneGhaem.ir

گروه فنی مهندسی شایم توسعه جیم  
**GHAEM TOSEE**  
 www.TowerCraneGhaem.ir

**TÜV**  
 ISO 9001

**POTAIN**

# Masts / Reactions

## Masts

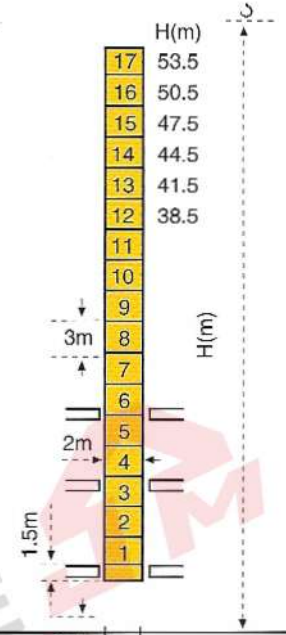
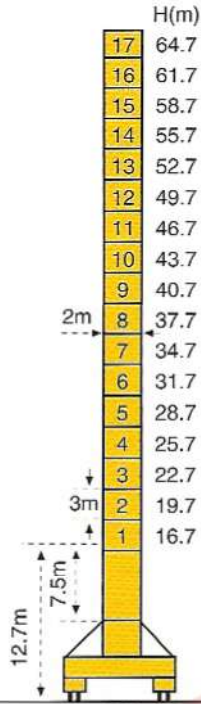
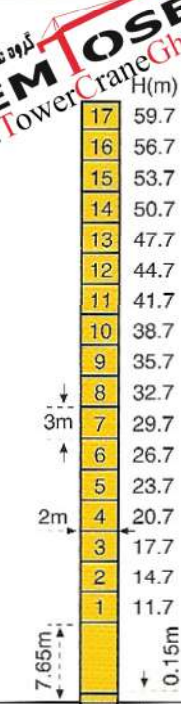


2m

## Jib

30m → 60m

گروه فناوری مهندسی قائم توسعه جیم  
**GHAEM TOSEE** Crane  
 www.TowerCraneGhaem.ir



F2 ↓ F3 ↑  
**P20A**

F1 ↓  
**VB 20 A**

**BA 65 A**

F2 • 140t ■ 195t  
 F3 • 87t ■ 148t  
 70t

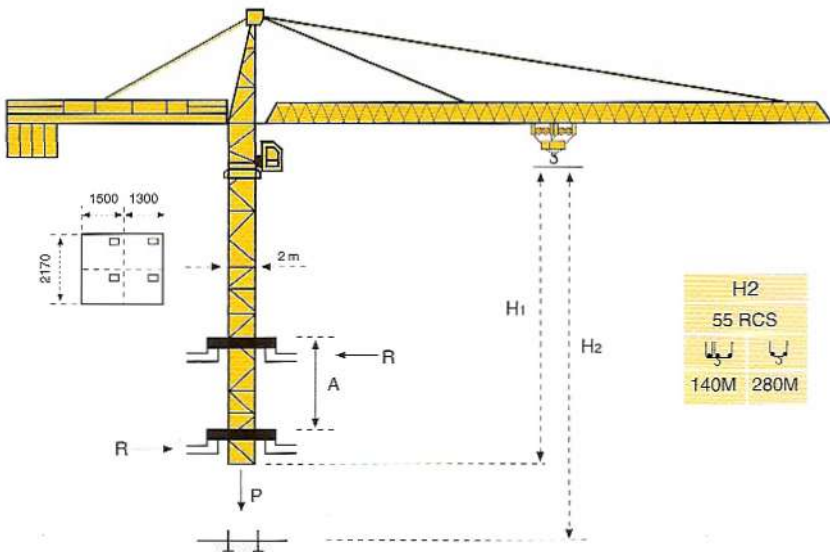
F1 • 106t ■ 136t  
 83t

Please consult us

### F = Reactions

- In service
- Out of service
- ⊕ Without load and ballast with longest jib and maximum height

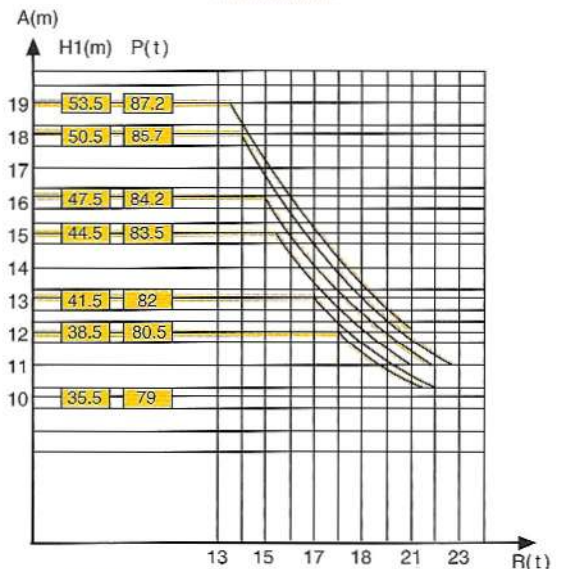
# Climbing crane



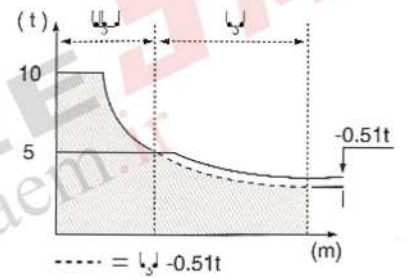
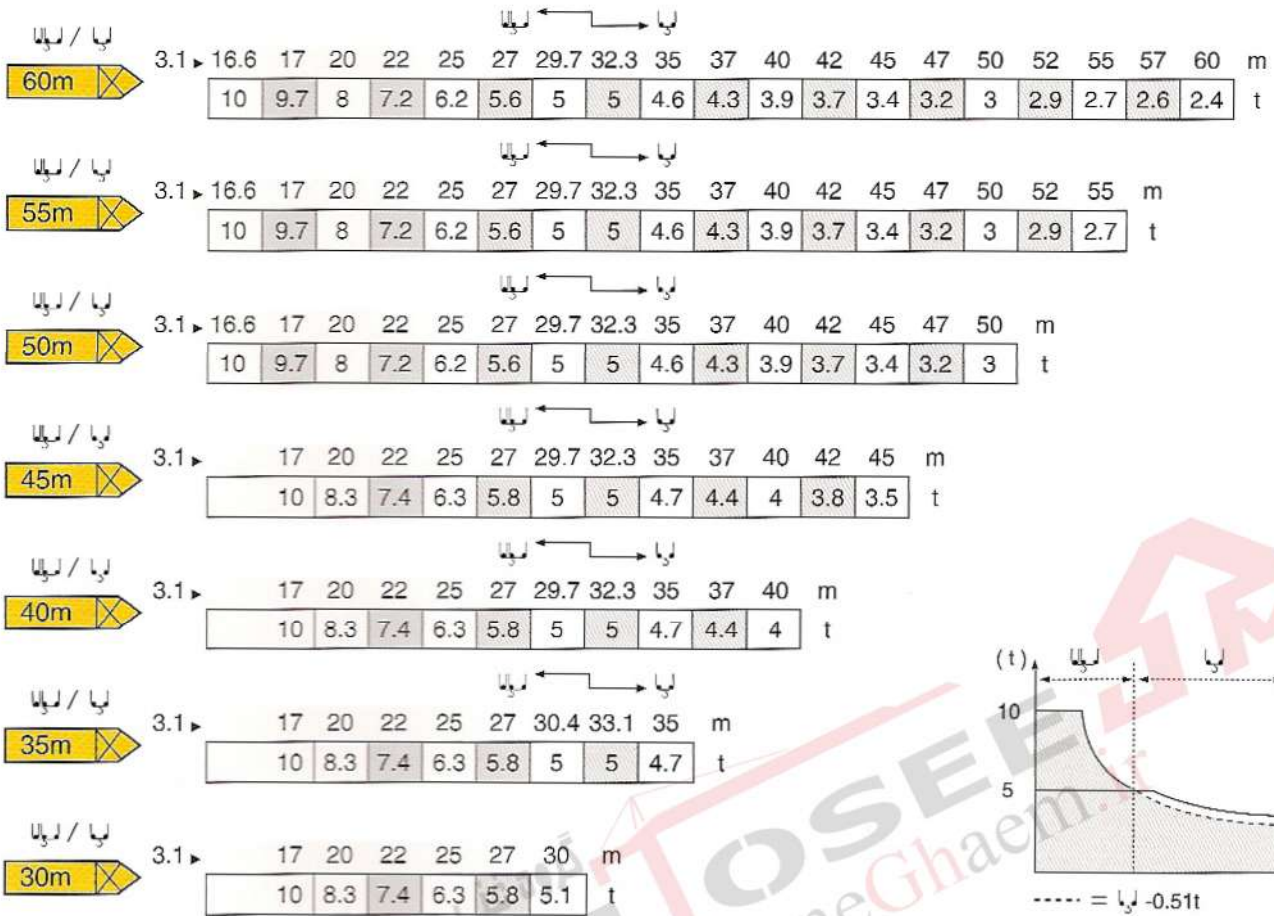
H2  
 55 RCS  
 140M 280M

A Distance between collars  
 P Crane weight (in service)  
 H1 Crane height  
 R Horizontal reaction

## BA 65 A

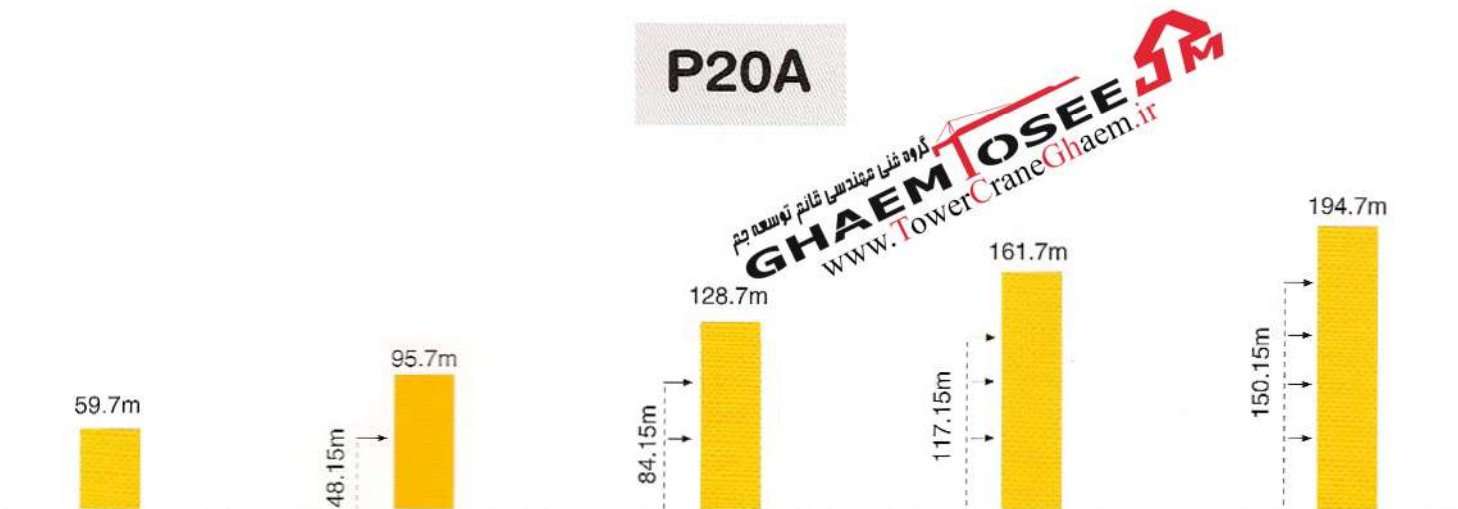


# Load diagrams



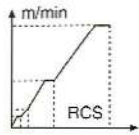

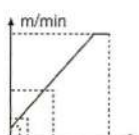








# Anchorage

P20A



# Mechanisms

 گروه ملی مهندسی قائم توسعه جم www.TowerCraneGhaem.ir		m/min	t	m/min	t	ch-Ps hp	kW	
Hoisting 	 55 RCS 25/13 VAI	0 ⇒ 42	5.0	0 ⇒ 21	10.0	55	40.5	560m
		0 ⇒ 84	2.6	0 ⇒ 42	5.2			
Trolleying 	 5 D3 V4	15 ⇒ 58 m/min				5	3.7	
Slewing 	 RCV 145	0 ⇒ 0.8 tr/min (rpm)				2 x 6	2 x 4.4	
Travelling 	VB 20A  R ≥ 13M RT 544 A1 2V	13.5 ⇒ 27.0 m/min				4 X 7	4 X 5.2	
CEI 38 	IEC 38	kVA		Generator Set				
400 V (+6% - 10%) 50 Hz		55 RCS : 75 kVA				*		

\* Please consult us.

Subject to Modification



**GROVE**  
**POTAIN** 

Manitowoc Crane Group Asia Pte Ltd  
Manitowoc Crane Group

26 Benoi Road  
Singapore 629 898  
Tel: 65-6861 7133  
Fax (Admin/Sales) : 65-6862 4040  
Fax (Service/Parts) : 65-6862 4142  
www.manitowoccrane.com

Copyright. © POTAIN 2003

دفتر تهران: خیابان پاسداران-خیابان شهید کلاهدوز (دولت) بین چهارراه قنات و کاره  
روبروی خیابان مطهری-شماره 276 واحد 1  
تلفن: 021-22766747 نمابر: 021-22766748

نمایشگاه و انبار سلفچگان: کیلومتر 45 جاده قم، دلیجان  
منطقه ویژه اقتصادی سلفچگان

دفتر مرکزی و کارخانه: منطقه صنعتی دولت آباد-فرعی اول جامی 2  
قائم توسعه جم تلفن: 031-45836808 , 031-95024603-6

همراه: 0913 311 4603 رضایی

**MC 205B**

Ref: 2003.06