

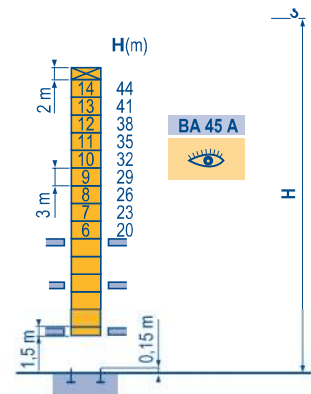
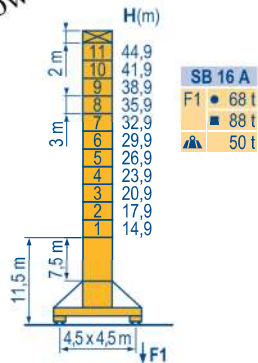
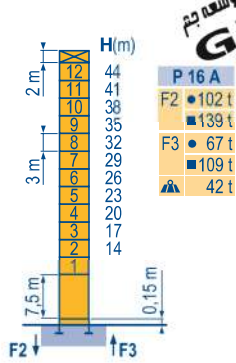


Masts / Reactions

MBY 1

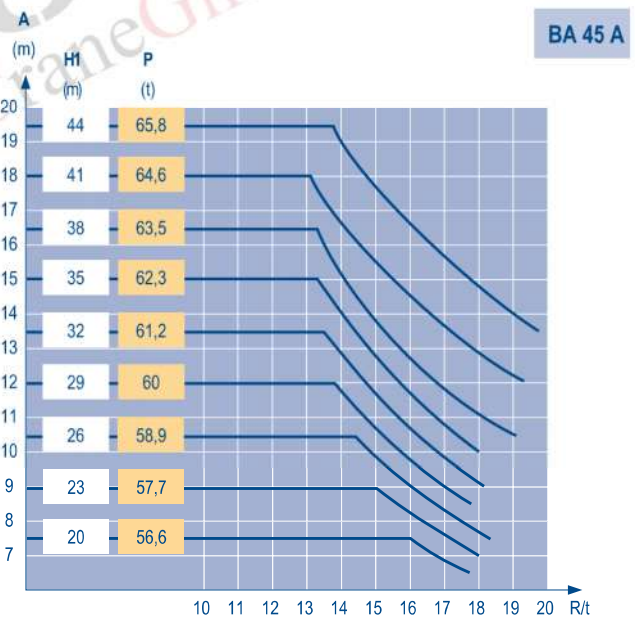
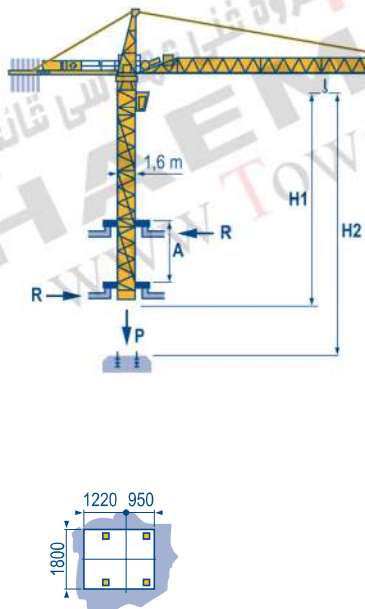
□ 1,6 m

▲ 30 m → 60 m



Climbing crane

MBY 1



CITY CRANE  
MC 175 B

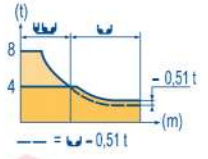
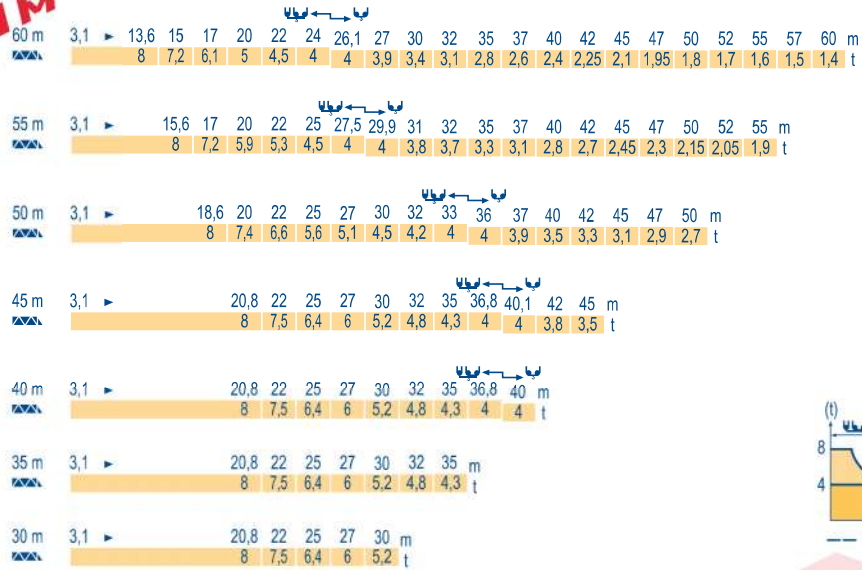


GB

- Reactions in service
- Reactions out of service
- ▲ Without load, ballast (or transport axles), with maximum jib and maximum height.
- 👁 See climbing crane

### Load diagrams

MBY 1



### Counter-jib ballast

MBY 1

Height (m)	Counter-jib length (m)	3450 kg	2250 kg	Ballast (kg)
60 m	16 m	4	2	18 300
55 m	16 m	3	3	17 100
50 m	16 m	3	2	14 850
45 m	13 m	5	1	19 500
40 m	13 m	4	2	18 300
35 m	13 m	3	3	17 100
30 m	13 m	3	2	14 850

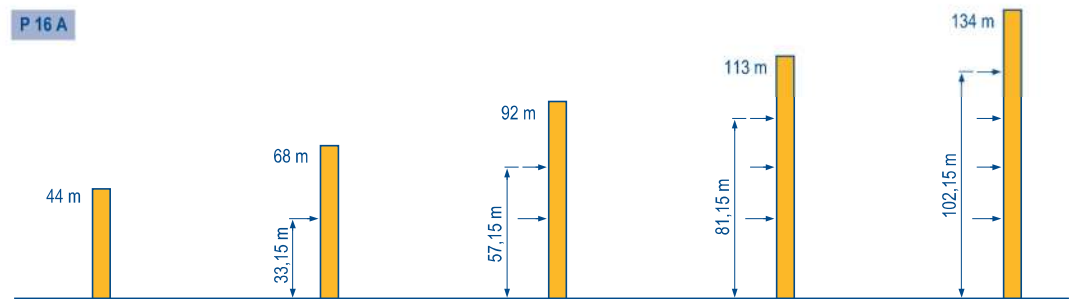
### Base ballast

MBY 1

Height (m)	44,9	41,9	38,9	35,9	32,9	29,9	26,9	23,9	20,9	17,9	14,9
SB 16 A	72	60	54	54	54	54	54	54	54	54	54

### Anchorage

MBY 1



### CITY CRANE MC 175 B



GB

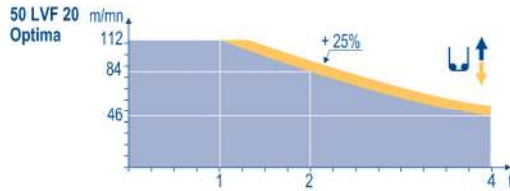
- A Distance between collars
- H1 Crane height
- P Crane weight (in service)
- R Horizontal reaction

# Mechanisms

MBY 2



				U		UU		hp	kW			
	45 RCS 20	m/min	0 → 40	0 → 80	0 → 20	0 → 40	45	33	329 m			
		t	4	2	8	4						
	5 D3 V4	m/min	15 - 30 - 58				5	3,7				
	50 LVF 20 Optima	m/min	3,8 → 14,8 → 46 → 58 → 84 → 112	1,9 → 7,4 → 23 → 29 → 42 → 56		50	37	363 m				
		t	4	4	4				3	2	1	8
	6 DVF 4	m/min	0 - 6 → 76				5,5	4				
	RCV 145	rpm	0 → 0,8				2 x 6	2 x 4,4				
	SB 16 A RT 324 R ≥ 10 m	m/min	12,5 - 25				2 x 7	2 x 5,2				
CEI 38		IEC 38		kVA								
400 V (+6% -10%) 50 Hz				45 RCS : 60 kVA 50 LVF : 70 kVA								



- GB Hoisting
- Trolleying
- Slewing
- Travelling



This commercial document is not legally binding.  
For any technical information, please refer to the corresponding instructions.



### Americas

Tel : +1 888 479 7278  
Tel : +1 717 593 2000

### Europe - Middle East - Africa

Tel : +33 (0) 4 72 81 50 00  
Tel : +44 (0) 191 522 2000

### Asia - Pacific

Tel : +65 6264 1188  
Fax : +65 6862 4040

www.manitowoccrane.com

### Manitowoc Crane Group Asia Pte Ltd

Manitowoc Crane Group

4 Kwong Min Road  
Singapore 628707

Tel: +65 6264 1188  
Fax: +65 6862 4040

www.manitowoccrane.com

دفتر تهران: خیابان پاسداران-خیابان شهید کلاهدوز (دولت) بین چهارراه قنات و کاوه

روبروی خیابان مطهری-شماره 276 واحد 1  
تلفن: 021-22766747 شماره: 021-22766748

نمایشگاه و انبار سلفچگان: کیلومتر 45 جاده قم، دلیجان  
منطقه ویژه ی اقتصادی سلفچگان

دفتر مرکزی و کارخانه: منطقه صنعتی دولت آباد-فرعی اول، جامی 2  
قائم توسعه جم تلفن: 031-95024603-6, 031-45836808

همراه: 0913 311 4603 رضایی

### MC 175 B

Réf. 2004 45 MBY 3

Copyright.Reproduction interdite © POTAIN 2004