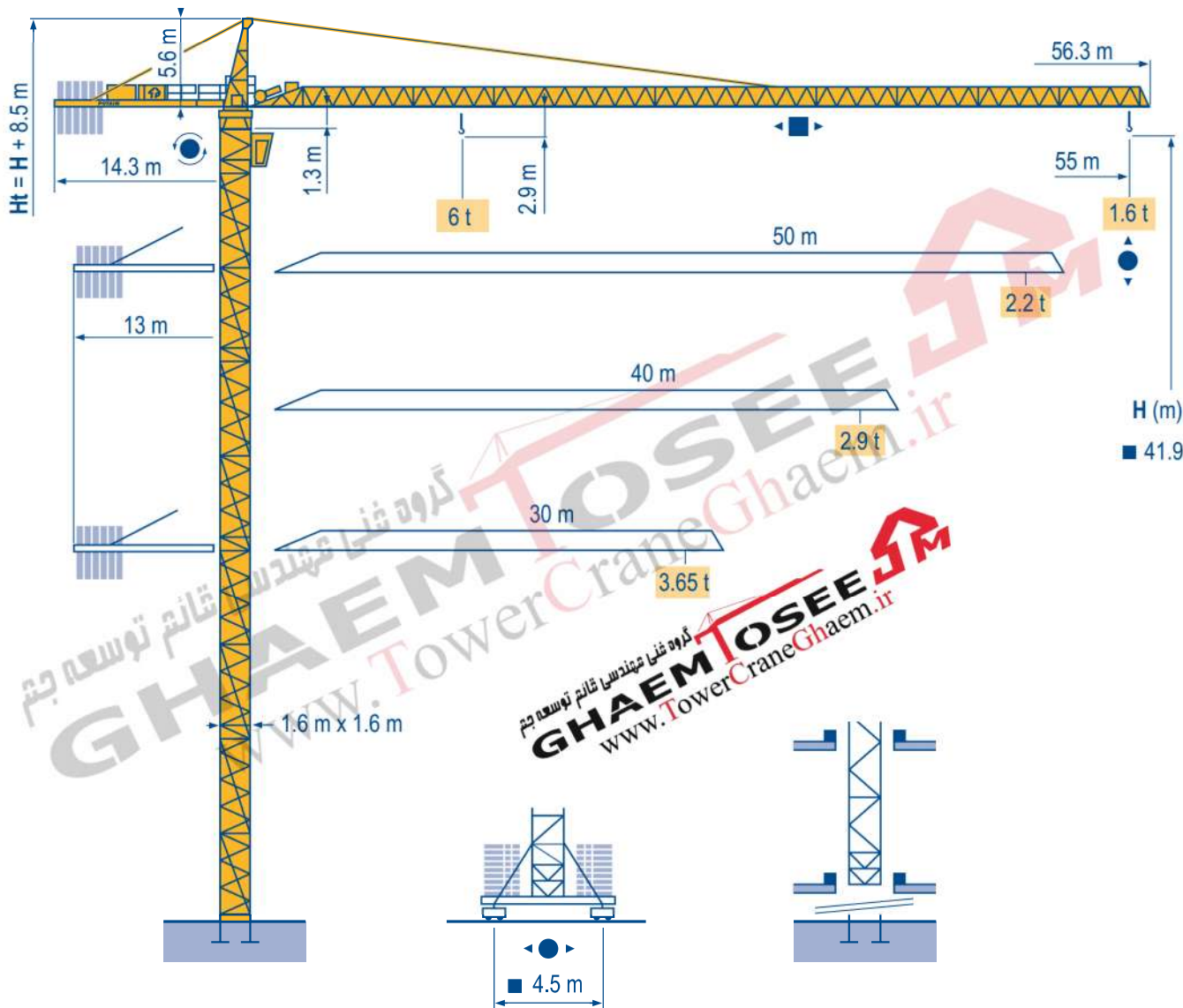


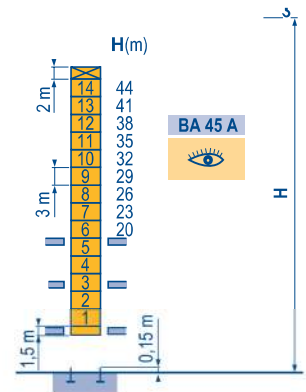
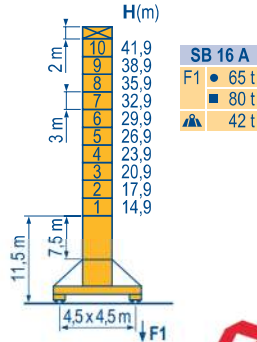
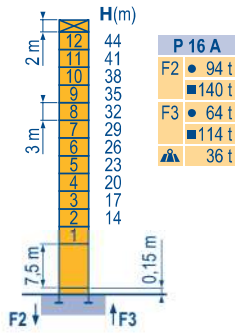
Potain MC 115 B



Masts / Reactions
 Композиции башни / Реакции

□ 1,6 m
 30 m → 55 m

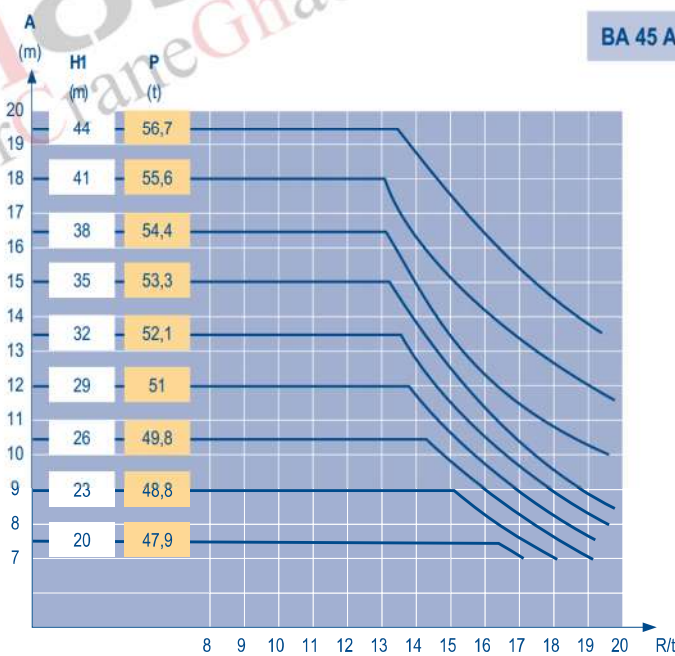
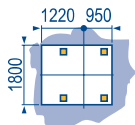
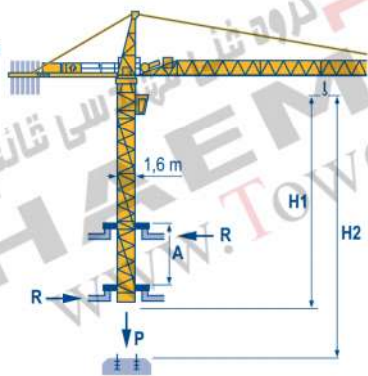
MBX 4



گروه فنی مهندسی قائم توسعه جیم
GHAEM TOSEE
 www.TowerCraneGhaem.ir

Climbing crane
 Кран, ползущий внутри здания

MBX 3



CITY CRANE
 MC 115 B

Potain

EN

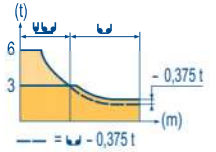
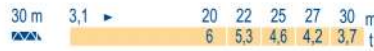
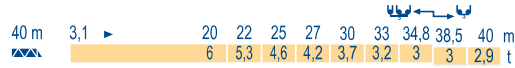
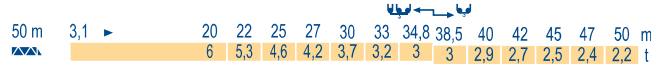
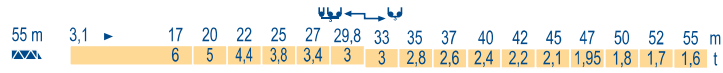
- Reactions in service
- Reactions out of service
- ▲ Without load, ballast (or transport axles), with maximum jib and maximum height.
- 👁 See climbing crane

RU

- Реакции при работе
- Реакции в покое
- ▲ Вес без груза, балласта (или транспортных осей), с максимальной длиной стрелы и максимальной высотой.
- 👁 См. кран, ползущий внутри здания

Load diagrams
Диаграммы
грузоподъемностей

MBX 2



گروه غنی مهندسی قائم توسعه جتم
GHAEM TOSEE
 www.TowerCraneGhaem.ir

Counter-jib ballast
Балласт на консоли

MBX 3

		3450 kg	2250 kg	(kg)
55 m	14,3 m	4	1	16 050
50 m	13 m	4	1	16 050
40 m	13 m	4	-	13 800
30 m	13 m	2	2	11 400

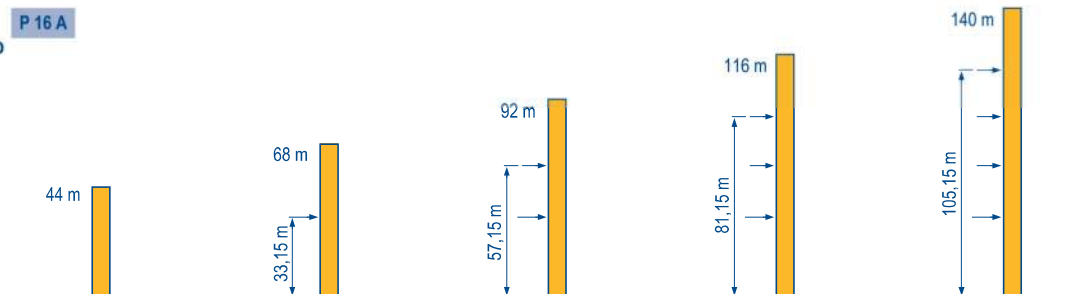
Base ballast
Базовый балласт

MBX 3

SB 16 A	H (m)	41,9	38,9	35,9	32,9	29,9	26,9	23,9	20,9	17,9	14,9
1,6 m	(t)	84	72	60	42	42	42	42	42	42	42

Anchorage
Рамки для крепления к зданию

MBX 2



CITY CRANE
MC 115 B

Potain

EN

- A** Distance between collars
- H1** Crane height
- P** Crane weight (in service)
- R** Horizontal reaction














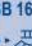

RU

- Расстояние между рамками крепления
- Высота крана
- Вес крана (при работе)
- Горизонтальные реакции

Mechanisms

Механизмы

MBX 5


									hp	kW	
											
	33 PC 15	m/min	6,2	38	76	3,1	19	38	33	24	260 m
		t	3	3	1,5	6	6	3			
	45 RCS 15 GH	m/min	0 → 56		0 → 112	0 → 28		0 → 56	45	33	408 m
		t	3		1,5	6		3			
	4 D3 V3	m/min	15 - 30 - 58						4	3	
	RCV 145	rpm	0 → 0,8						2 x 6	2 x 4,4	
	SB 16 A RT 324 R ≥ 10 m	m/min	12,5 → 25						2 x 7	2 x 5,2	
CEI 38  IEC 38			KVA								
400 V (+6% -10%) 50 Hz			33 PC : 50 KVA 45 RCS : 65 KVA								

EN

-  Hoisting
-  Trolleying
-  Slewing
-  Travelling

RU

- Подъем
- Перемещение каретки
- Поворот
- Перемещение крана

 This commercial document is not legally binding.
For any technical information, please refer to the corresponding instructions.

Этот коммерческий документ не является юридически обязательным.
Для получения технической информации, см. соответствующие инструкции.

دفتر تهران: خیابان پاسداران-خیابان شهید کلاهدوز (دولت) بین چهارراه قنات و کاوه
روبروی خیابان مطهری-شماره 276 واحد 1
تلفن: 021-22766748 نمایر: 021-22766747

نمایشگاه و انبار سلفچگان: کیلومتر 45 جاده قم-دلیجان
منطقه ویژه ی اقتصادی سلفچگان

دفتر مرکزی و کارخانه: منطقه صنعتی دولت آبادخرعی اول، جامی 2
قائم توسعه جم تلفن: 031-95024603-6، 031-45836808
همراه: 0913 311 4603 رضایی

Manitowoc

Asia-Pacific Factories

China • No.55 East Zhen Bei Road, Zhangjiagang Economic Development Zone (South), Jiangsu Province, China 215618
Tel 86 512 58780 088 Fax 86 512 5878 0098

India • 72-76, Mundhwa Industrial Estate, Pune - 411 036,
Maharashtra, India Tel 91 20 6644 5500 Fax 91 20 6644 5599

Regional Headquarters

Americas • Manitowoc, Wisconsin, USA • Tel 1 920 684 6621 Fax 1 920 683 6278

Europe, Middle East & Africa • Ecully, France • Tel 33 472 18 2020 Fax 33 472 18 2000

Asia Pacific • Shanghai, China • Tel 86 21 6457 0066 Fax 86 21 6457 4955

MC 115 B
Réf. 2009 45 MBX 7