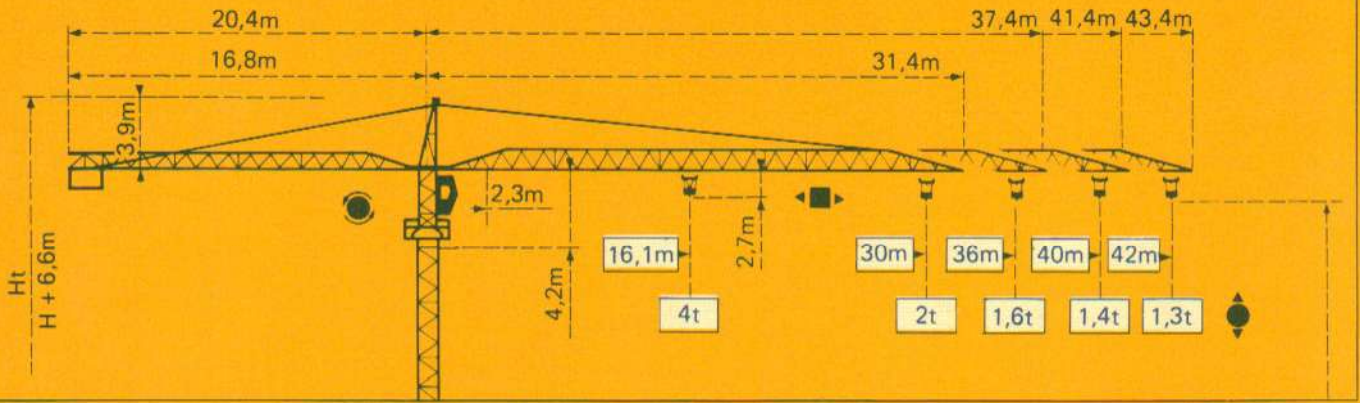




GAT 430

POTAIN 



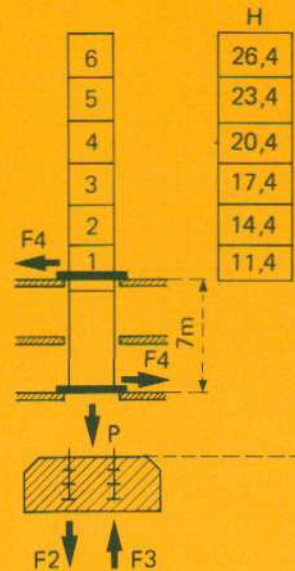
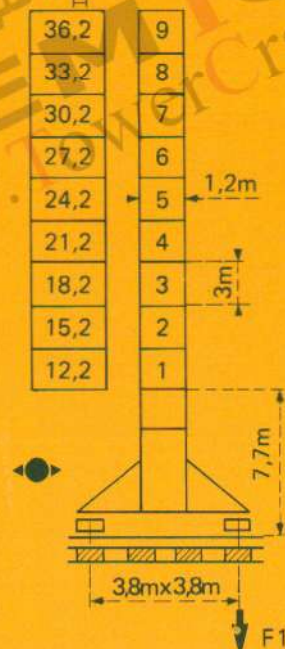
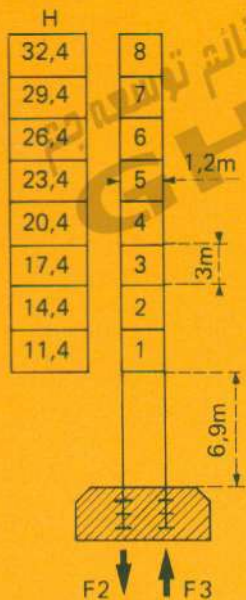
Mature Mast Mast Mástil
 $\varnothing 1,2\text{m} \times 1,2\text{m}$

گروه فنی مهندسی قائم توسعه جت
GHAEM TOSEE 
 www.TowerCraneGhaem.ir

$H = 1 + 8 + 1 = 32,4$


$H = 1 + 9 + 1 = 36,2$
 $H = H_{\text{mast}} + 0,3\text{m}$

$H = 1 + 6 + 1 = 26,4$



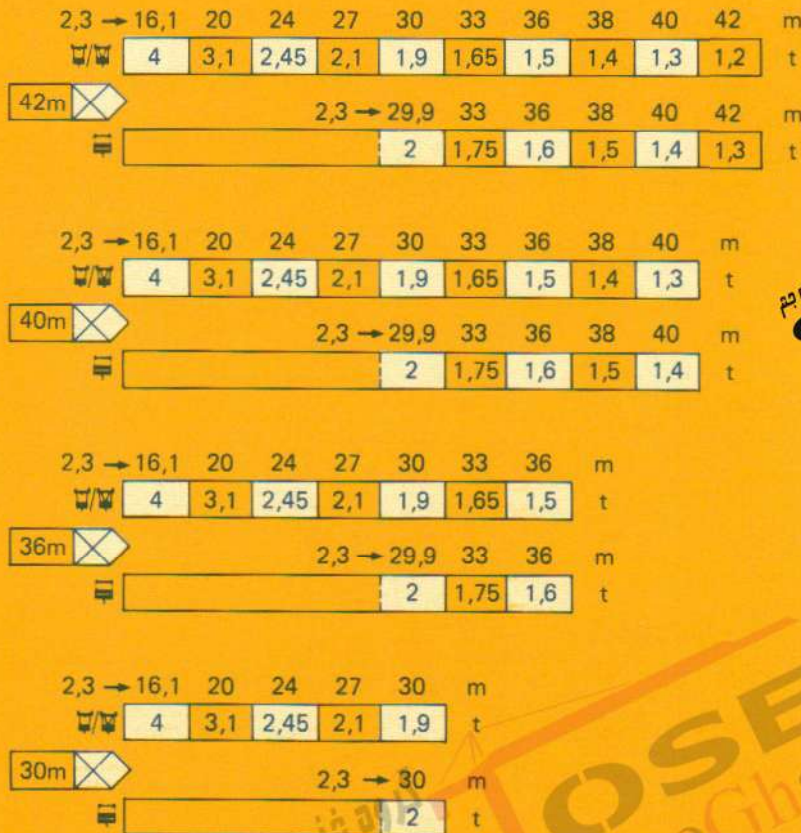
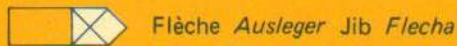
F = Réactions *Eckdrücke* *Reactions* *Reacciones*

F2	● 50 t	■ 52 t
F3	● 38 t	■ 41 t
	17 t	

F1	● 32 t	■ 38 t
	25 t	

F2	● 44 t
F3	● 32 t
F4	● 8,5 t
P	● 23,7t

Courbes de charges Lastkurven Load curves Curvas de cargas

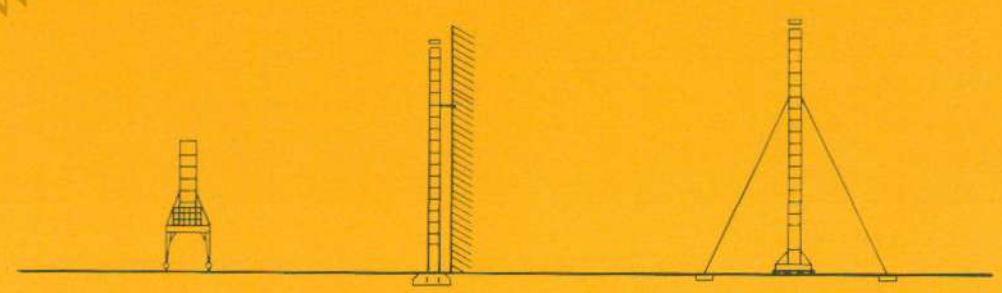


گروه غنی مهندسی قائم توسعه جم
GHAEM TOSEE
 www.TowerCraneGhaem.ir






















- Chariot standard 2/4 brins.
- Chariot optionnel 2 brins uniquement.
- Standardlaufkatze 2/4 Stränge.
- Laufkatze in Sonderausführung mit nur 2 Strängen.
- Standard trolley 2/4 fall.
- Optional trolley 2 fall only.
- Carro standard 2/4 ramales.
- Carro opcional en 2 ramales solamente.

Autres implantations Aufstellmöglichkeiten
 Mounting possibilities Otras implantaciones

Nous consulter
 Consult us
 Bei uns rückfragen
 Consultarnos



- | | | | |
|---|--|---|--|
| <p>H > H maxi : nous consulter</p> <ul style="list-style-type: none"> ● En service ■ Hors service <p> A vide sans lest avec flèche et hauteur maximum.</p> | <p>H > H maxi : consult us</p> <ul style="list-style-type: none"> ● In service ■ Out of service <p> Without load and ballast with longest jib and maximum height.</p> | <p>H > H maxi : bei uns rückfragen</p> <ul style="list-style-type: none"> ● In Betrieb ■ Ausser Betrieb <p> Ohne Last und Ballast mit Maximalausleger und Maximalhöhe.</p> | <p>H > H máxi : Consultarnos</p> <ul style="list-style-type: none"> ● En servicio ■ Fuera de servicio <p> Sin cargas, sin lastre con flecha y altura máxi-ma.</p> |
|---|--|---|--|

				m/min	t		ch-PS hp	kW
Levage Heben Hoisting Elevación	PC 22 D  			8	2	318 m > 318 m	22	16,2
				45	2			
				90	1			
				4	4			
				22,5	4			
				45	2			
Distribution - Katzfahren Trolleying - Distribución		2D2V2	14 42			2	1,5	
Orientation - Schwenken Slewing - Orientación		OMD 30	0,8 tr/min U/min-rpm			8	6	
Translation - Kranfahren Travelling - Traslación		TB	25			2 x 4	2 x 3	
Puissance électrique nécessaire Anschlusswert Necessary electric power Potencia eléctrica necesaria	380 V 50 HZ  60 HZ	Réseau - Netzstrom - Mains supply - Red		30 kVA				
		Groupe électrogène Stromaggregat Generator set Grupo electrogeno						

* Nous consulter - Auf Anfrage - Consult us - Consultarnos

گروه فنی مهندسی قائم توسعه جم
GHAEM TOSEE
 www.TowerCraneGhaem.ir

POTAIN 

18, rue de Charbonnières B.P 173 – F 69130 ECULLY
 Tél. (7) 833.81.81 - Télex 330 179
 EXPORT 207, rue de Bercy - Tour MATTEI - 75012 PARIS
 Tél. (1) 347.30.77 - Télex 215 483
 POTAIN GmbH - D 6082 MÖRFELDEN - WALLDORF
 Nordendstr. 79-87 - Postfach 420 - Tel. (6 105) 5091 - Telex 4 185745
 POTAIN SUISSE S.A. - CH 5115 MÖRIKEN WILDEGG
 Tel. 64.53.19.91 - Telex 68294

دفتر تهران: خیابان پاسداران-خیابان شهید کلاهدوز (دولت) بین چهارراه قنات و کاوه
 روبروی خیابان مطهری شماره 276 واحد 1
 تلفن: 021-22766747 نمابر: 021-22766748
 نمایشگاه و انبار سلفچگان: کیلومتر 45 جاده قم، دلیجان
 منطقه ویژه ی اقتصادی سلفچگان
 دفتر مرکزی و کارخانه: منطقه صنعتی دولت آباد فرعی اول، جامی 2
 قائم توسعه جم تلفن: 031-95024603-6, 031-45836808
 همراه: 0913 311 4603 رضایی